



PRODUCT COMPARISON

BendPak® HD-9 Series* vs. Direct Lift® ProPark 8 Series*

*Design features and specifications are subject to change. Please consult factories for updates.

DIRECT LIFT® is registered trademark of ROTARY LIFT® Corporation.

BENDPAK® and RANGER PRODUCTS® are registered trademarks of BendPak Inc.

Here at BendPak, we believe that one of the primary forces pushing our industry forward is friendly competition. And if you're already familiar with the website, www.aStudyInLiftDesign.com, you know that we like to cut through the marketing fluff and conduct straightforward comparative analyses. This strategy provides both us and the consumer with definitive proof that BendPak car lifts and truck lifts are as robust and feature-rich as possible. At the same time, it's enlightening to review the stark differences in design, materials and manufacturing that can exist between two seemingly identical products.

A bit about our methods: No doubt you've noticed that our test subjects have differing lifting capacities. The reason for this is simple; BendPak currently does not offer an 8,000-lb. max capacity four-post lifting solution. Therefore, **this test is not at all concerned with weight capacity**--we fully believe that, yes, each lift is capable of supporting the reported amount. Instead, we've focused our lens on build-quality and engineering to let you draw your own conclusions about how those significant factors will affect performance and long-term value. Nonetheless, both car lifts are considered to be in the same weight class and, despite a 1,000-lb. capacity difference, sell within less than \$500 of each other.

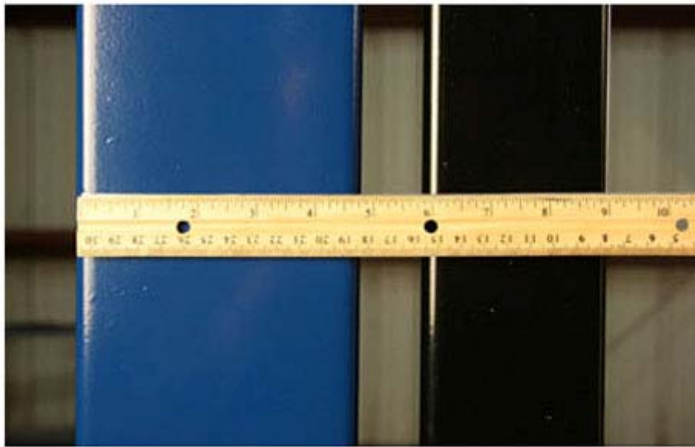
Instead of overwhelming you with our own verbiage, the following comparison mostly presents the reader with a set of illustrative photos, our nine against their eight--side by side, top to bottom. What you do with this renewed perspective is your own decision. However, if you would like some more information on our findings, please read the summary posted at the end.

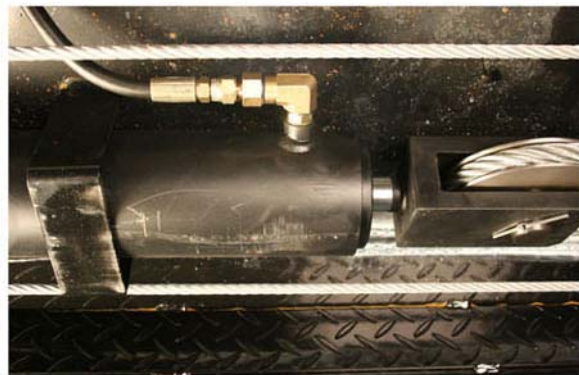
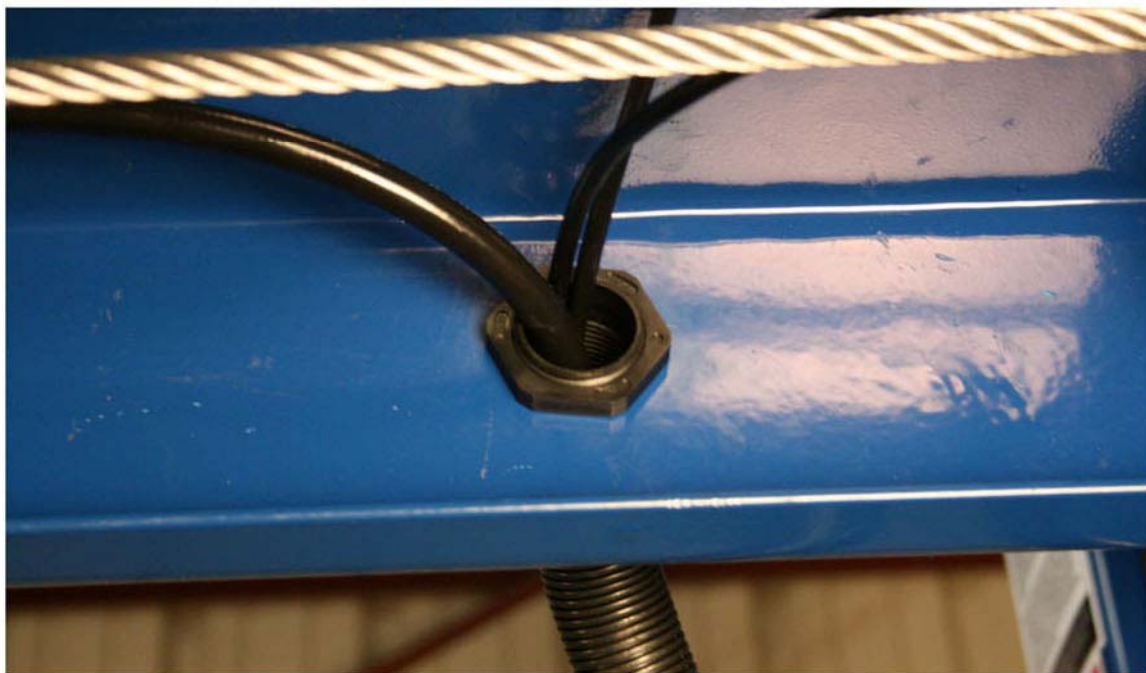
The BendPak 9,000-lb. HD-9 car lift vs. an 8,000-lb. Direct Lift

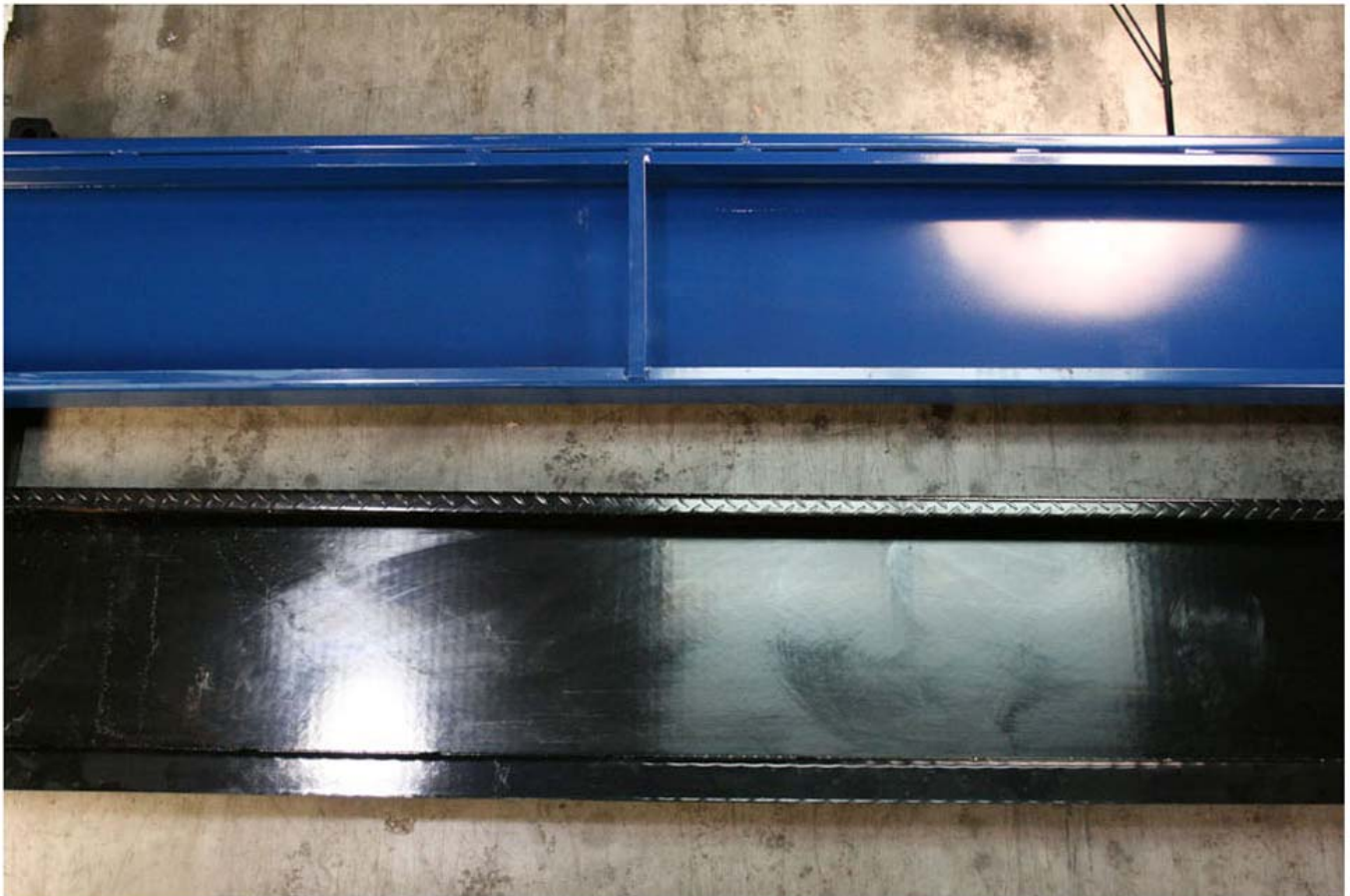
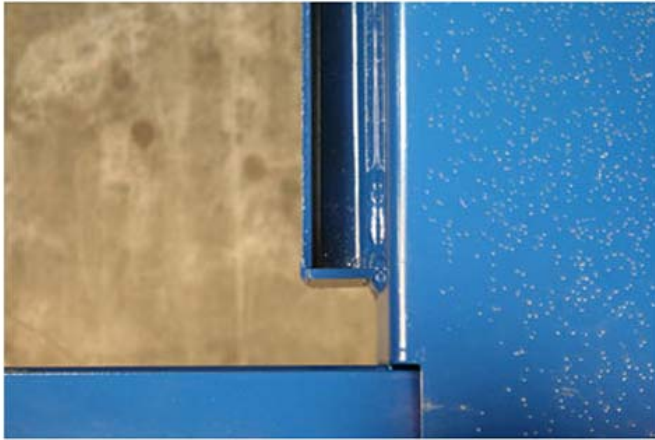


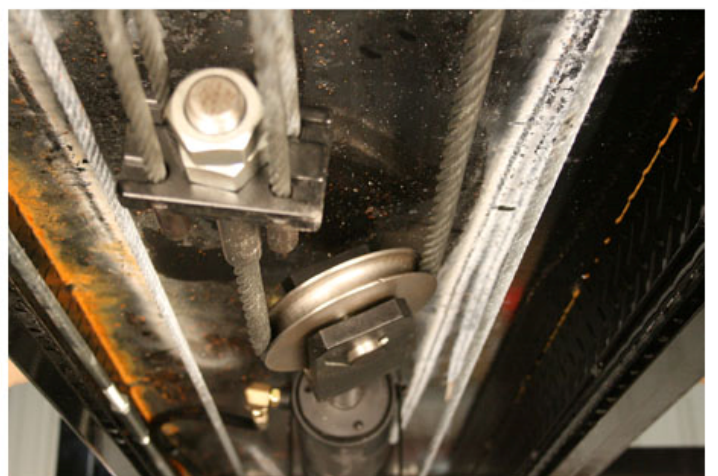
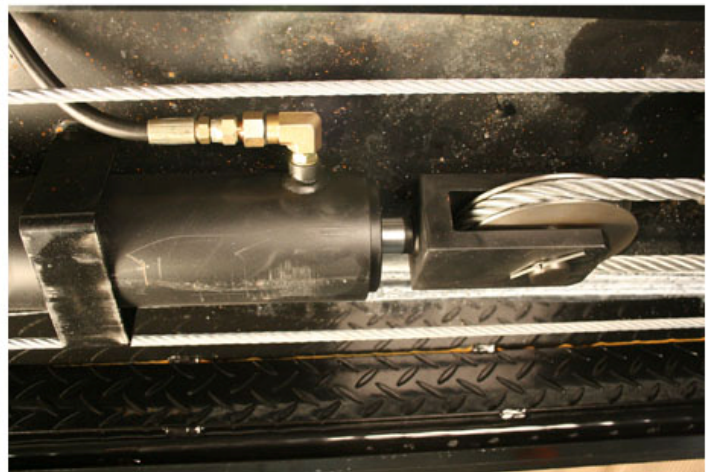
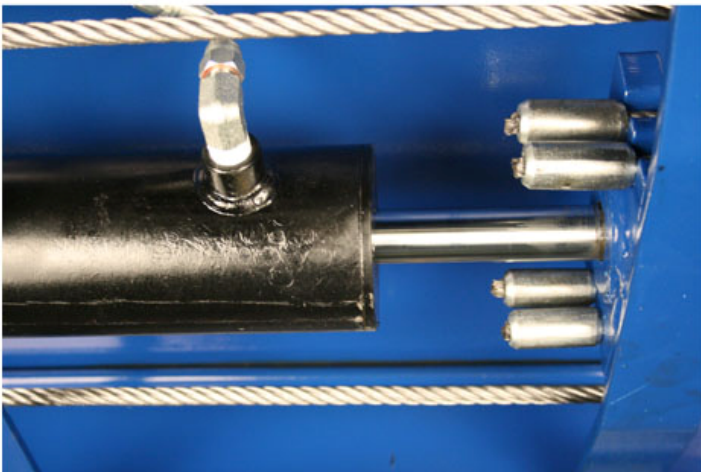
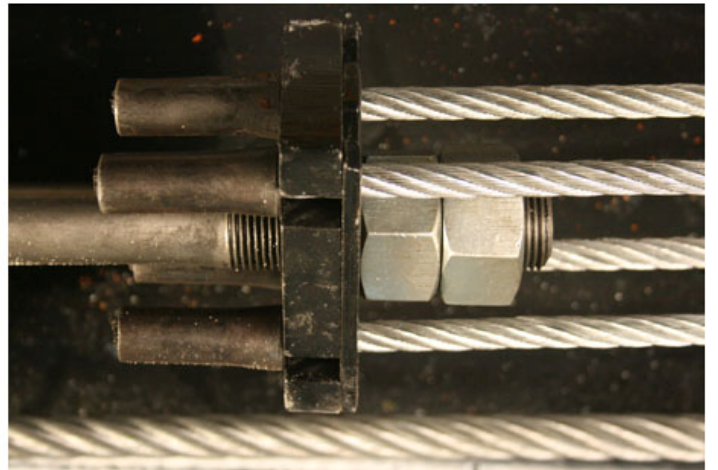


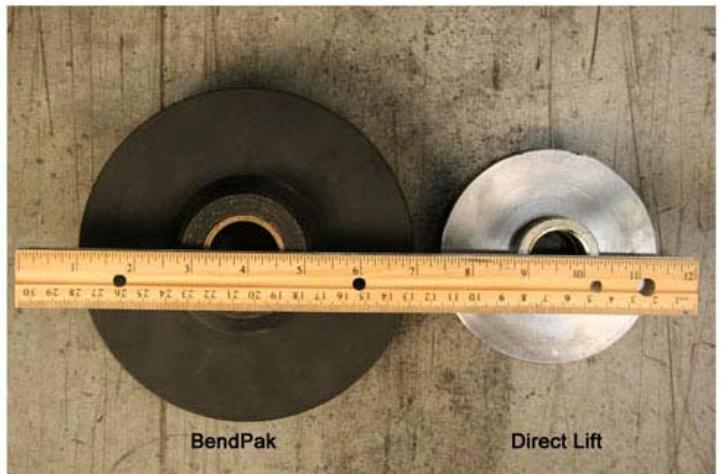


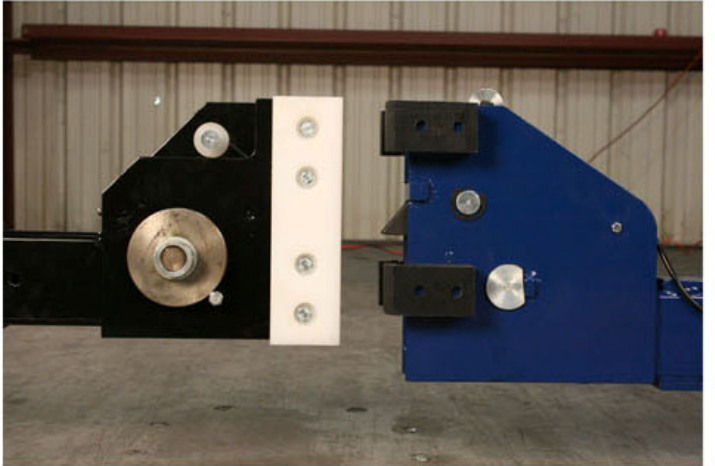
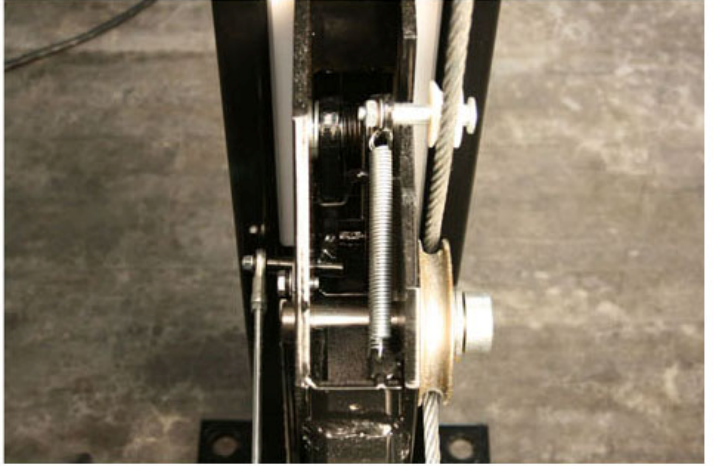
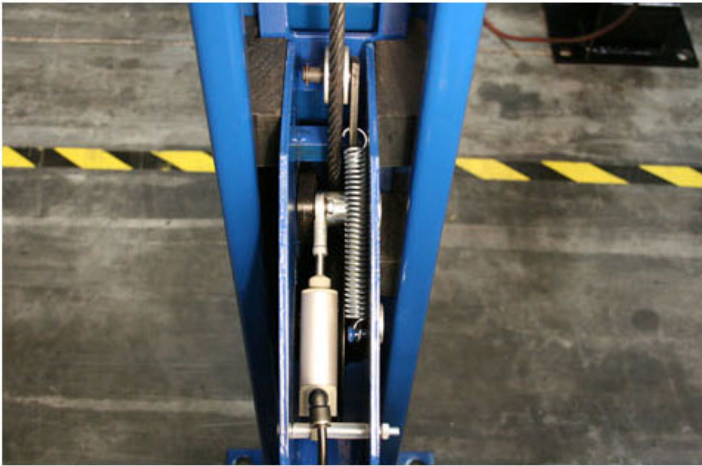




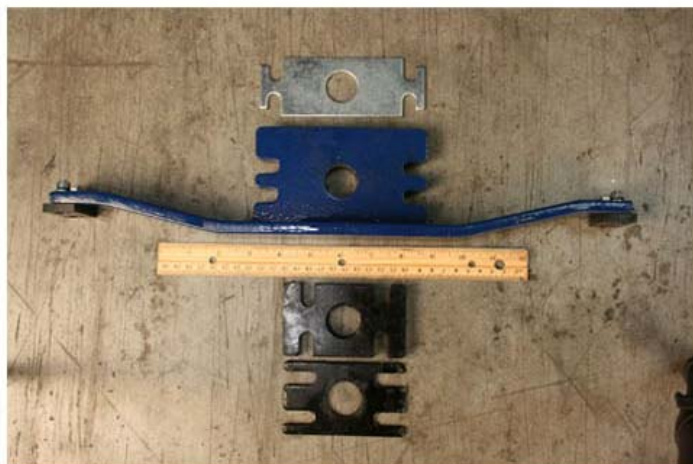








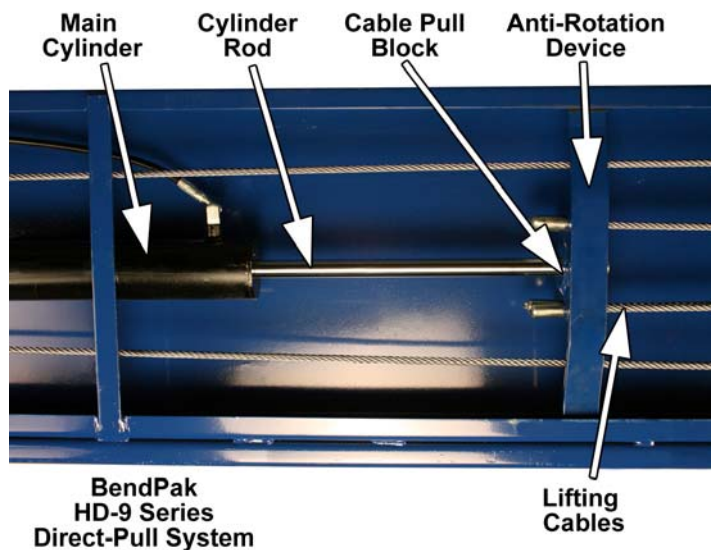
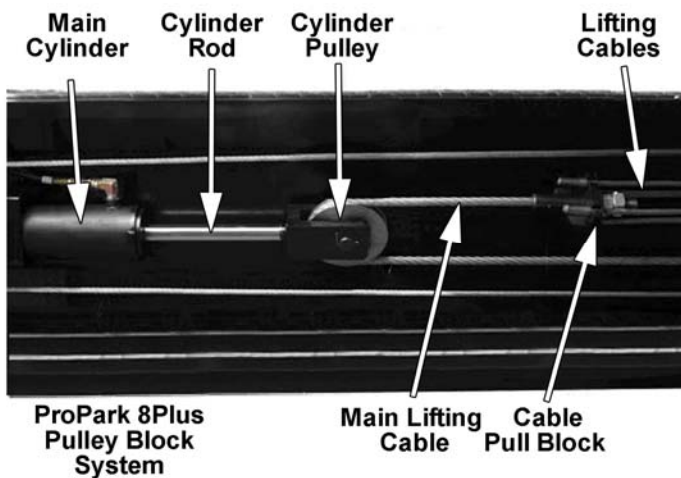
Note: The Direct lift uses an anchored cable design (2-1 lifting ratio) as opposed to BendPak's direct-pull (1-1 lifting ratio). An anchored cable design requires more force which requires a larger diameter cylinder.





SUMMARY

- Most all BendPak components are considerably heavier than their Direct Lift ProPark-8 counterparts.
- The Direct Lift ProPark-8 Plus utilizes a "pulley" system (2 to 1 lifting) as opposed to a direct-pull set-up like BendPak's HD-9 Series models (1 to 1 lifting). BendPak's direct-pull design (**shown below**) allows the four independent cables to be attached directly to the cylinder pull-block. The four lifting cables on the Direct Lift pulley design (**shown below**) are attached to a single lone lifting cable that is tethered from the end of a cylinder pulley. The single cable carries the entire load during raising or lowering operations.



SUMMARY CONTINUED

- The ProPark-8 Plus pulley system requires a larger diameter cylinder and higher working pressure because it takes twice as much hydraulic force as a direct pull setup (BendPak).
- BendPak's cable-block features anti-rotation outriggers that minimize rotation caused by cylinder movement and helps maintain perfect alignment of the lifting cables.
- BendPak cable sheaves are much larger diameter meaning your lifting cables will have a much longer life expectancy and have less chance for fatigue or failure.
- BendPak approach ramps have rollers on the bottom so your floors don't get scraped up every time the lift is lowered.
- BendPak cable sheaves are wider and have over 300% the bearing (bronze bushing) surface for prolonged service life.
- The BendPak lift has real skid-grit on the runways as opposed to diamond plate. Although diamond plate has a unique appearance, it does little for skid assurance when the runways are wet or oily.
- The BendPak lift has more locking positions.
- The Direct Lift ProPark-8 lifts have external mounted cross tube sheaves that are side loaded relative to the centerline of the cross tube. External mounted cross tube sheaves tend to put more strain and bending moment on the sheave axles. The sheaves are held in place by a single external shaft collar.
- The Direct Lift ProPark-8 cables are not neatly routed within the structure of the lift.
- BendPak lifts are equipped with a single push-button pneumatic lock system. Direct Lifts have clumsy, multi-rod, multi-adjustment, manually operated locks featuring a handle you need to hold down during the full decent. Remember – the lift is moving as you are holding the handle down to the floor.
- BendPak runways feature a separate welded on rail assembly (for the jacks and trays) that acts as a stiffener making it less likely that the runways will sag when loaded.
- (Not pictured) BendPak includes 12-months of labor in addition to our five years structure and one year parts warranty. Direct Lift excludes labor under their standard warranty offering.

OUR CONCLUSIONS

Although we'd like to say that both candidates have their strong points, our comparison proves it's a little more than one-sided. Let's face it, the Direct Lift's best selling point is price--and even there the discount is not worth what you're losing. Price is what you pay for a product or service; cost is what you pay over the lifetime of the product. We're proud to say that BendPak is not only the car lift global leader, but the support and service global leader as well.

If you plan on getting the most out of your lift, please consider quality, service and support, company history, peace-of-mind, ease of doing business, overall product performance and safety before making your purchase. For an insider's guide to buying a car lift, please have a look at the [Top 10 Things You Need To Know Before Buying A Lift](#).

At BendPak, we lay all our cards on the table because we know the difference between an informed consumer and an unsatisfied customer is research. Make sure that your lift company is on your side.