



Air Compressor Manual



For questions concerning this air compressor, please call
866-869-3114

! WARNING

THIS PRODUCT CAN EXPOSE YOU TO CHEMICALS INCLUDING LEAD, WHICH IS KNOWN TO THE STATE OF CALIFORNIA TO CAUSE CANCER AND BIRTH DEFECTS OR OTHER REPRODUCTIVE HARM. FOR MORE INFORMATION GO TO WWW.P65WARNINGS.CA.GOV 2024114400

Part# 2022209681

Rev. 8/2022

TABLE OF CONTENTS

	<u>PAGE</u>
Table of Contents	1
Safety Guidelines – Definitions	2
Important Safety Instructions	2
Save these instructions	2
Before using the air compressor.....	2
When installing or moving the compressor.....	3
Before each use.....	3
Follow the safety precautions for electrical connections	4
Plan ahead to protect your eyes, hands, face and ears	4
When operating.....	4
Spraying precautions.....	5
Perform these maintenance operations.....	5
Typical Compressor Installation	6
Glossary of Terms	6
Wiring	7
Single and Three Phase with Mag Starter	8
Single and Three Phase Duplex	9
Single and Three Phase QP	10
Starting the Compressor	11
Gas Drive Models.....	11
Battery Connection Instructions for Electric Start Engines	11
Cold Start Procedure (Gasoline Engine Units)	12
Compressor Features	13
Sound Attenuating Enclosure - QP Models	13
Low Oil Level Switch - QP and Elite Models	13
Thermal Protection - QP Models	13
Troubleshooting Guide	14
Pump Specifications	16
Tank Specifications	16
Manually Draining an Air Tank.....	17
Part Identification	18
Compressor Pump 4116091336 (PAT24)	26
Compressor Pump 4116091337 (PAT38)	27
T39 (4116090019).....	28
PAT49 (1609402496)	29
CA1 (1312202800)	30
CA2 (1312202700)	32
Warranty Statement	34

SAFETY GUIDELINES – DEFINITIONS

Safety is a combination of common sense, staying alert and knowing how your compressor works. Read this manual to understand this compressor.



DANGER

means if safety information is not followed someone **will** be seriously injured or killed



WARNING

means if safety information is not followed someone **could** be seriously injured or killed



CAUTION

means if safety information is not followed someone **may** suffer moderate or minor injury

IMPORTANT SAFETY INSTRUCTIONS

Save these instructions

Improper operation or maintenance of this product could result in serious injury and property damage. Read and understand all warnings and operation instructions before using this compressor.

Before using the air compressor

Things you should know

Air compressors are utilized in a variety of air system applications. Because air compressors and other components (hoses, connectors, air tools, spray guns, etc.) make up a high pressure pumping system, the following safety precautions should be observed at all times.

Only persons familiar with these rules of safe operation should use the air compressor

1. Read the instruction manual carefully before attempting to assemble, disassemble or operate your system. Be thoroughly familiar with the controls and the proper use of the equipment.
2. Review and understand all safety instructions and operating procedures in this manual.
3. Review the maintenance methods for this compressor throughout this manual.

Inspect your work area

1. Keep work area clean.
2. Cluttered areas and benches invite accidents. Floors must not be slippery from water or dust.

Inspect your compressor

1. To reduce the risk of injury from accidental starting, turn switch off and disconnect the power before checking it.
2. If any part is missing, bent or broken in any way or any electrical part does not work properly, keep the compressor off and disconnected.
3. Check hoses for weak or worn condition before each use, making certain all connections are secure. Do Not use if defect is found.



WARNING

Do not operate compressor if damaged during shipping, handling or use. Damage may result in bursting and cause injury or property damage.



DANGER

This compressor is NOT designed for and should not be used in breathing air applications.

When installing or moving the compressor



WARNING

This compressor is extremely top heavy. Unless otherwise noted, it must be bolted to the floor with vibration pads before operating to prevent equipment damage, injury or death. DO NOT tighten bolts completely as this may cause stress to the tank welds. See **Illustration 1a**.

To reduce the risk of a dangerous environment

1. Keep work area well lit.
2. Operate compressor in a well-ventilated area free from flammable liquids and vapors.
3. Operate compressor in a ventilated area so that compressor may be properly cooled and the surrounding air temperature will not be more than 100°F (38°C).
4. Never use a compressor in a wet environment.
5. Protect material lines and air lines from damage or puncture. Keep hose and wires away from sharp objects, chemical spills, oil, solvents and wet floors.



WARNING

DO NOT secure compressor with toggle bolts into drywall. Drywall sheeting or plaster will not support the weight of the compressor and serious injury could result.

Always Shut off gas valve before moving gas drive compressors

6. A minimum clearance of 18 inches (46 cm) between the compressor and a wall is required because objects could obstruct airflow

7. The compressor should be located where it can be directly wired to a circuit breaker. Based on design, certain compressors should be wired by a qualified electrician.
8. Never store flammable liquids or gases in the vicinity of an operating compressor.
9. DO NOT locate the compressor air inlet near steam, paint spray, sandblasting areas or any other source of contamination. The debris could damage the motor or the pump.



WARNING

Never use plastic (PVC) pipe for compressed air. Serious injury or death could result.



CAUTION

Never use the shipping skid for mounting the compressor.



NOTICE

Electric compressors are not suitable for outdoor installation.



NOTICE

Gasoline compressors must be operated outdoors, sheltered from the weather.



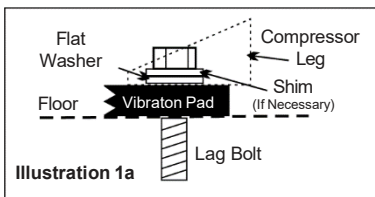
WARNING

Never install a shut off valve between the compressor pump and tank. Personal injury and/or equipment damage could occur.

Before each use

Inspect your work area

1. Keep work area clean. Cluttered areas and benches invite accidents.
2. The floor must not be slippery from water or dust.



Inspect your compressor

1. To reduce the risk of injury from accidental starting, turn the switch off and disconnect power.
2. If any part is missing, bent or broken in any way, or any electrical part does not work properly, keep the compressor off and disconnect power. DO NOT use if defect is found.
3. Check hoses for weak or worn condition before each use, making certain all connections are secure. DO NOT use if a defect is found.

Follow the safety precautions for electrical connections

1. Follow all local electrical and safety codes, as well as the National Electric Code (NEC) and the Occupational Safety and Health Act (OSHA).
2. Wiring and fuses should follow electrical codes, current capacity and be properly grounded.

3. Protect wires from contact with sharp objects.



CAUTION

All electrical connections should be made by a qualified electrician.

Plan ahead to protect your eyes, hands, face and ears

Dress for safety

1. Wear safety glasses (meeting ANSI Z87.1 or in Canada CSA Z94.3-99) and use hearing protection when operating the unit. Everyday glasses are not safety glasses.
2. Wear shoes to prevent shock hazards.
3. Tie back long hair.



WARNING

Never operate the compressor without a belt guard. The compressor can start automatically without warning. Personal injury or property damage could occur from contact with moving parts.

Pay attention to your hands



WARNING

Keep fingers away from running compressor. Fast moving and hot parts may cause injury and/or burns.



CAUTION

The compressor may be hot even if the unit is stopped.



CAUTION

Be careful when touching the exterior of compressor, pump, motor and air lines; they may become hot enough to cause injury.



WARNING

Use of a mask or respirator per chemical manufacturers' instructions may be necessary if there is a chance of inhaling toxic fumes. Read mask and respirator instructions carefully. Consult a safety expert if you are not sure about the use of certain masks or respirators.

When operating

1. Do not exceed the pressure rating of any component of the system.
2. Release pressure within the system slowly to prevent flying dust and debris.
3. If the equipment starts to abnormally vibrate, STOP the compressor immediately and check for the cause.



WARNING

To avoid serious injury, never change the safety valve or pressure switch settings. Keep safety valve free from paint and other accumulations. See compressor specification decal for maximum operating pressure. Do not operate with the pressure switch set higher than the maximum operating pressure.

Spraying precautions



WARNING

Never point a spray gun at yourself or any other person or animal. Accidental discharge may result in serious injury.

1. DO NOT spray in the vicinity of open flames or other places where a spark can cause ignition. DO NOT smoke when spraying paint, insecticides or other flammable substances.

Reduce the risk of dangerous environment



WARNING

Extreme caution should be taken when spraying flammable liquids, as the spark from a motor or pressure switch may cause a fire or explosion. Ample ventilation must be provided.

Be informed about the materials you use

1. When spraying with solvents or toxic chemicals, follow the instructions provided by the chemical manufacturer. Consult a safety expert if unsure about the use of masks or respirators.
2. If the material you intend to spray contains trichloroethane and methylene chloride, do not use accessories that contain aluminum or galvanized materials, as these chemicals can react with galvanized components, causing corrosion and weakening equipment. Use stainless steel accessories.



WARNING

Spray in a well ventilated area to keep fumes from collecting and causing serious injury and fire hazards.

Perform these maintenance operations

1. Do regular maintenance; keep all nuts, bolts, and screws tight, to be sure equipment is in safe working condition.
2. Inspect tank yearly for rust, pin holes or any other imperfections that could cause it to become unsafe.



WARNING

Disconnect power and depressurize system before servicing air compressor to avoid injury. Slightly open drain cock after shutting off compressor.



WARNING

NEVER attempt to repair or modify a tank! Welding, drilling or any other modification will weaken the tank, resulting in damage from rupture or explosion. To avoid injury, always replace worn, cracked or damaged tanks.

3. Clean electrical equipment with an approved cleaning agent, such as a dry, non-flammable cleaning solvent.
4. Drain tanks of moisture after each day's use. If unit will not be used for a while, it is best to leave the drain cock open until such time as it is to be used. This will allow moisture to completely drain out and help prevent corrosion of inside of tank.
5. Always disconnect from power source before working on or near a motor or its connected load. If power disconnect point is out-of-sight, secure it in the "OFF" position and tag it to prevent unexpected application of power.

Daily

Check oil level at sight glass. Oil level should be 1/2 to slightly higher in the oil sight glass.

Drain moisture from tank.

Verify the pressure switch unloader is working by listening for a brief hissing sound when the compressor shuts off.

Visually check the compressor for loose parts, excessive noise or vibration. Tighten any necessary part.

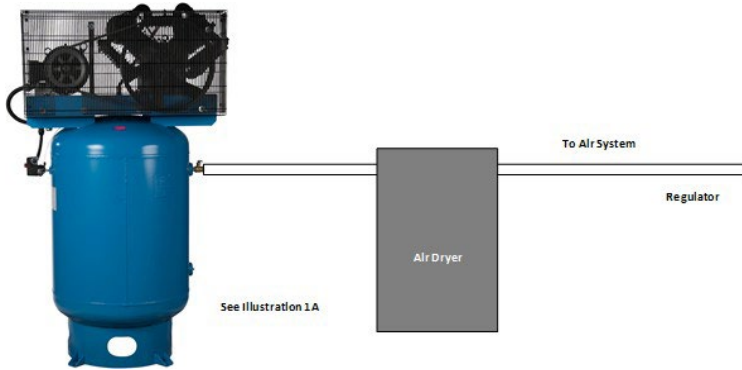
Monthly

(Make sure the main power is off.) Check the belts for tension. Belts should not move up and down when the compressor runs and when stopped, should not have more than 1/2 inch (13 mm) of play when depressed. Be careful not to over tighten belts during adjustment.

Remove and check air filter, replace if necessary.

Change oil every 3 months or 300 hours. A compressor grade 30 wt non-detergent oil should be used. Use 40 wt non-detergent for single stage.

TYPICAL COMPRESSOR INSTALLATION



GLOSSARY OF TERMS

Air Filter

Porous element contained within a metal or plastic housing attached to the compressor cylinder head which removes impurities from the intake air of the compressor.

Air Tank

Cylindrical component which contains the compressed air.

Check Valve

Device which prevents compressed air from flowing back from the air tank to the compressor pump.

Electric Motor

Device which provides the rotational force necessary to operate the compressor pump.

Pressure Gauge

Device which shows the tank or regulated pressure of the compressed air.

Pressure Switch

Device which automatically controls the on/off cycling of the compressor. It stops the compressor when the cut-off pressure in the tank is reached and starts the compressor when the air pressure drops below the cut-in pressure.

PSI (Pounds per Square Inch)

Measurement of the pressure exerted by the force of air. The actual psi is measured by a pressure gauge on the compressor.

Pump

Device which produces the compressed air with a reciprocating piston contained within a cylinder.

Safety Valve

Device which prevents air pressure in the air tank from rising over a predetermined limit.

Thermal Overload Switch

Device, integrated into the electric motor winding, which automatically "shuts off" the compressor if the temperature of the electric motor exceeds a predetermined limit.

Tank Drain Valve

Valve located at bottom of the air tank, provided to drain any condensation build-up. Tank should be drained daily after use.

WIRING

WARNING

ALL ELECTRICAL WIRING SHOULD BE DONE BY A QUALIFIED ELECTRICIAN.

General Information

Adequate wiring and motor protection should be provided for all stationary compressors. Wiring used for other machinery should not be used. A qualified electrician familiar with local electrical codes in your area should be used. Size supply wiring per NEC (National Electric Code) requirements.

WARNING

To reduce the risk of electrical hazards, fire hazards or damage to the compressor, use proper circuit protection. Your compressor is wired at the factory for operation using the voltage shown. Connect the compressor to a power source with the correct breaker size.

WARNING

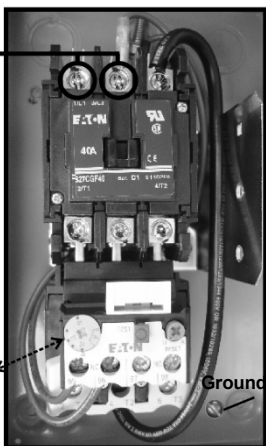
Electrical connections must be properly grounded. Ground connections should be connected at the grounding screw.

CAUTION

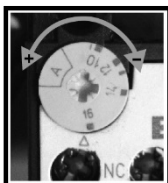
Overheating, short circuiting and fire damage will result from inadequate wiring.

Single Phase

Incoming power should be connected to L1 and L2 at the Top of the Magnetic Starter.



Overload Adjustment



Three Phase



Incoming power should be connected to L1, L2 & L3 at the top of the Magnetic Starter.

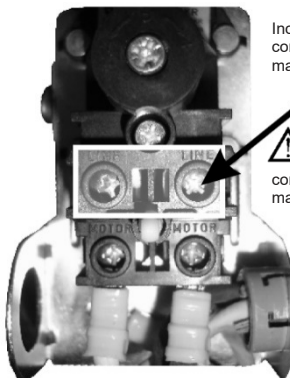
Ground

DO NOT MAKE CONNECTIONS AT THE PRESSURE SWITCH (Units with Magnetic Starters)

Duplex

Power should be brought into the left-hand starter. Do not bring power to both starters.

For Models Without Magnetic Starter



Incoming power should be connected to the posts marked (LINE)

Do not make connections on prewired posts marked (MOTOR)!

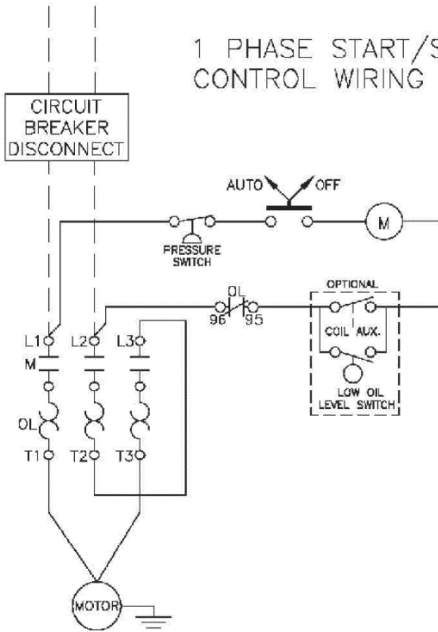
Electrical connections must be properly grounded. Ground connections should be connected at a grounding screw.



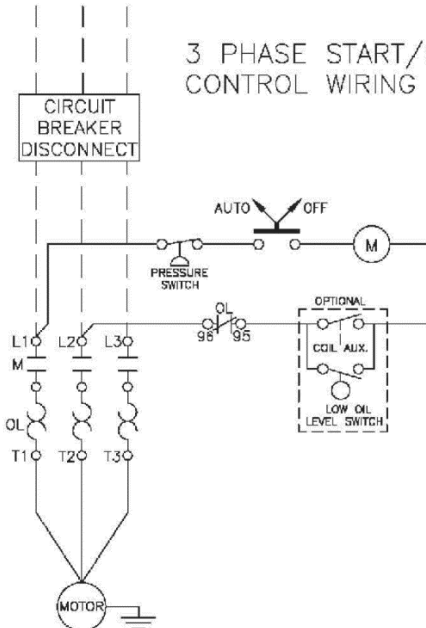
WIRING

Single and Three Phase with Mag Starter

1 PHASE START/STOP CONTROL WIRING SCHEMATIC



3 PHASE START/STOP CONTROL WIRING SCHEMATIC

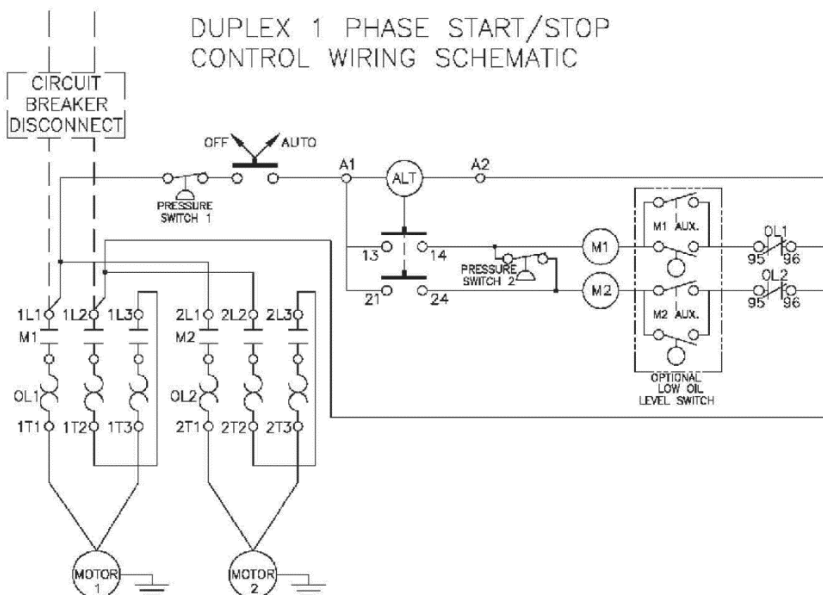


--- Customer supplied

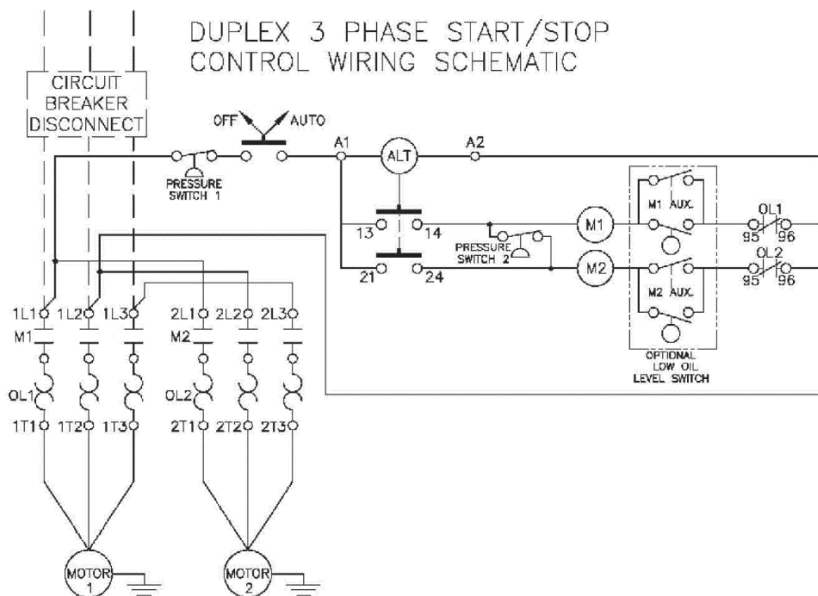
WIRING

Single and Three Phase Duplex

DUPLEX 1 PHASE START/STOP CONTROL WIRING SCHEMATIC



DUPLEX 3 PHASE START/STOP CONTROL WIRING SCHEMATIC

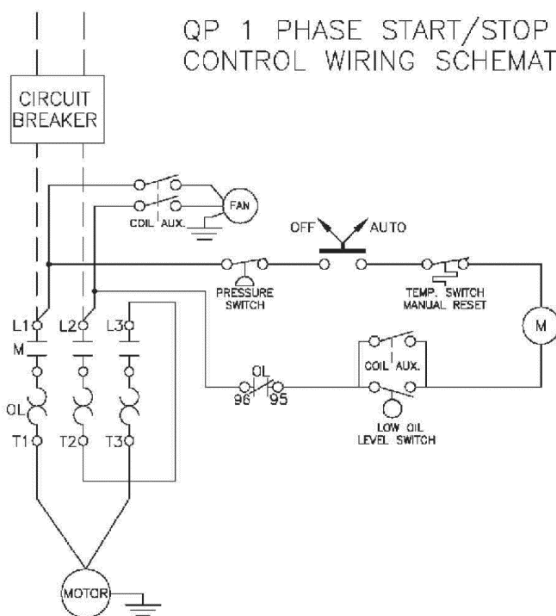


— — Customer supplied

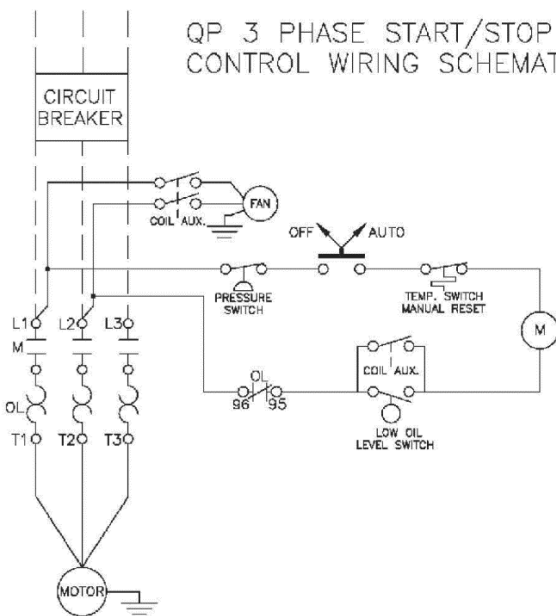
WIRING

Single and Three Phase QP

QP 1 PHASE START/STOP CONTROL WIRING SCHEMATIC



QP 3 PHASE START/STOP CONTROL WIRING SCHEMATIC



— — Customer supplied

STARTING THE COMPRESSOR

Prior to actually running the compressor, check the following items:

Crankcase oil - Make sure the sight glass shows 1/2 full or slightly above.

Make sure all rags, tools, oil, etc. are away from the unit.

Open the air system to free it of any pressure.

Switch the compressor on for a few revolutions to make sure the rotation is correct. Correct rotation is clockwise when facing the sight glass on the pump.

Operate the compressor for a few minutes unloaded (air system open) then allow the compressor to pump up. Make sure the electrical pressure switch properly switches off the compressor according to the setting desired. 175 psi for Two Stage and 135 psi for Single Stage.



CAUTION

Make sure the pressure in the tank does not exceed its rating: Single Stage units at 135 psi, Two Stage units at 175 psi.

If the pressure gauge indicates a pressure that is higher than these maximum pressures, shut off compressor immediately and call your distributor.

Gas Drive Models

PLEASE REFER TO YOUR ENGINE OPERATION MANUAL FOR PROPER STARTING INSTRUCTIONS.

GASOLINE DRIVEN COMPRESSORS ARE EQUIPPED WITH A COLD START VALVE FOR LOADLESS STARTS.

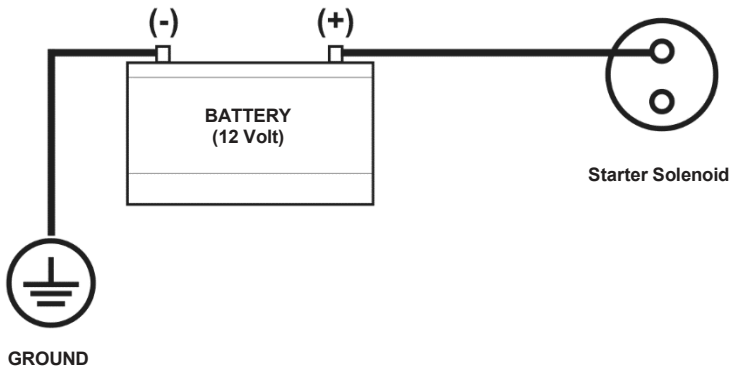
NOTE: IN SOME INSTANCES, IT STILL MAY BE NECESSARY LIFT THE TOGGLE ON THE UNLOADER/PILOT VALVE TO RELIEVE THE HEAD PRESSURE. See Page 11.

Battery Connection Instructions for Electric Start Engines

NOTE: Make sure to follow instructions carefully to avoid a short and possible damage to the starter solenoid and/or battery.

1. Connect the positive (+) terminal on the battery to the starter solenoid.
2. Connect the negative (-) terminal on the battery to an engine mounting bolt or other acceptable ground connection.

Always connect the positive (+) battery cable to the starter solenoid before connecting the negative (-) battery cable. NUMBER 2 WIRE OR LARGER IS REQUIRED.

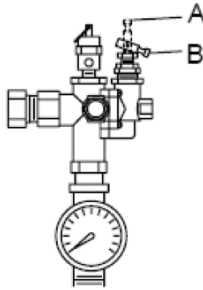




WARNING

DO NOT OPERATE GASOLINE ENGINE UNITS IN AN ENCLOSED AREA.

- Release any remaining tank pressure by slowly opening the manual drain valve.
- Turn on the engine gasoline supply.
- Put the choke in the “On” position.
- Close the service valve and put Unloader lever in the “unload” (A) position for Briggs and Stratton and Honda engine driven models, or the “load” (B) position for Kohler engine models.
- Start the engine, release the choke, and allow the engine to warm up for two to three minutes.
- Return the unloader lever to the “load” (B) position on Briggs and Stratton and Honda driven models.

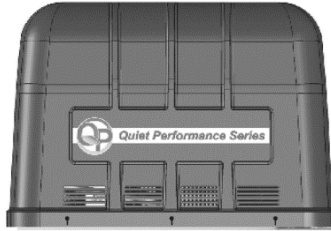


NOTE: Turn the gasoline supply off when the compressor is not being used.

COMPRESSOR FEATURES

Sound Attenuating Enclosure - QP Models

You have purchased a state of the art ABAC QP compressor. The QP comes equipped with sound attenuating enclosure. For maintenance, the canopy and side foam pieces will need to be removed.



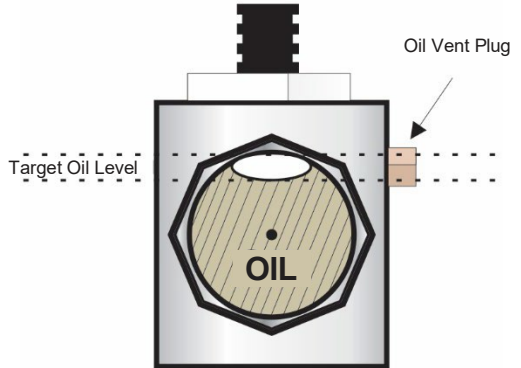
To remove the canopy, simply remove the 6 fasteners and lift the canopy straight up and off.

Low Oil Level Switch - QP and Premium Models

The function of the low oil level switch is to keep the air compressor from starting if the oil level drops beyond a certain point.

For compressors outfitted with the low oil level switch, the oil should appear in the top 1/3 of the oil sight glass (note this level will be higher than on pumps without this feature).

When changing or adding oil, it is important to remove the Oil Vent Plug to allow for the oil to flow completely into the switch.



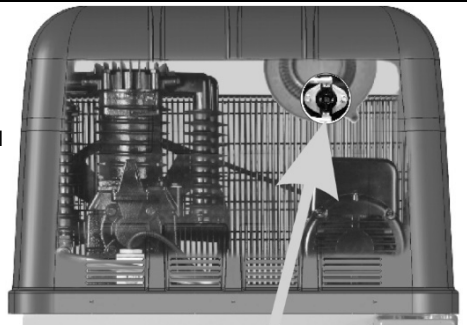
Thermal Protection - QP Models

If the cooling fan were to fail or internal temperature were to reach 180°F (82°C), the protective thermal fuse outfitted on QP models will trip.

When tripped, the fuse can be reset. The canopy will need to be removed to reset the thermal fuse.



Press to Reset



**Location of Fuse
(Inside Canopy Behind Fan)**

TROUBLESHOOTING GUIDE

<p>Low discharge pressure</p>	<ol style="list-style-type: none"> 1. Compressor too small for application 2. Air leaks 3. Restricted intake air 4. Blown gasket(s) 5. Broken or misaligned valves 	<ol style="list-style-type: none"> 1. Reduce air demand or use a compressor with more air capacity. 2. Listen for air leaks. Apply a soap solution to all fittings and connections. Bubbles will form at points of leakage. Tighten or replace fittings or connections. 3. Clean or replace air filter. 4. Replace necessary gaskets. 5. Remove head and inspect for broken or misaligned valves. Replace valves, if necessary. <p>⚠ CAUTION</p> <p>Install a new head gasket each time head is removed.</p>
<p>Excessive noise "knocking"</p>	<ol style="list-style-type: none"> 1. Loose drive pulley or flywheel 2. Low on oil 3. Worn connecting rod or connecting rod bearing 4. Noisy check valve 	<ol style="list-style-type: none"> 1. Tighten drive pulley or flywheel bolt. 2. Check for proper oil level. Low or dirty oil may cause bearing damage. 3. Replace connecting rod and/or connecting rod bearings. 4. Replace check valve. <p>⚠ DANGER</p> <p>Do not remove check valve with air pressure in tank.</p>
<p>Excessive oil carryover</p>	<ol style="list-style-type: none"> 1. Worn piston rings 2. Restricted intake air 3. Too much oil in compressor 4. Incorrect oil viscosity 	<ol style="list-style-type: none"> 1. Replace with new piston rings. 2. Clean or replace air filter. 3. Drain oil to proper oil level. 4. Use a quality non-detergent 30 or 40 wt oil specified for each model (Page 4).
<p>Water in tank and/or discharge line</p>	<ol style="list-style-type: none"> 1. Normal amount of water will increase as humidity in the air increases. 	<ol style="list-style-type: none"> 1. Drain tank at least once per day. 2. Add an inline filter to reduce moisture in the air line.
<p>Will not run or motor hums</p>	<ol style="list-style-type: none"> 1. Low voltage 2. Malfunctioning pressure switch 3. Malfunctioning check valve 	<ol style="list-style-type: none"> 1. Check voltage with volt meter across both legs of incoming power. Check reset button on motor. 2. Repair or replace pressure switch. 3. Replace check valve or pressure switch. <p>⚠ DANGER</p> <p>Do not remove check valve with air pressure in tank.</p>

TROUBLESHOOTING GUIDE (Continued)

Breaker or reset repeatedly trips	<ol style="list-style-type: none"> 1. Incorrect breaker size 2. Low voltage 3. Malfunctioning motor 4. Loose electrical connections 5. Malfunctioning pressure switch 6. Malfunctioning check valve 	<ol style="list-style-type: none"> 1. Make sure the breaker is sized properly. See page 6 in this manual. 2. Check voltage with volt meter across both legs of incoming power. 3. Replace motor. 4. Check all electrical connections. 5. Adjust or replace pressure switch. 6. Replace check valve. <p>⚠ DANGER</p> <p>Do not remove check valve with air pressure in tank.</p>
Tank does not hold pressure when not running and shut off valve is closed	<ol style="list-style-type: none"> 1. Malfunctioning check valve 2. Loose fittings or connections 3. Crack or pin hole in tank 	<ol style="list-style-type: none"> 1. Replace check valve. <p>⚠ DANGER</p> <p>Do not remove check valve with air pressure in tank.</p> <ol style="list-style-type: none"> 2. Tighten or replace fittings or connections. 3. Replace tank. Do not attempt to repair tank.
Pressure switch unloader constantly leaking air	<ol style="list-style-type: none"> 1. Malfunctioning check valve 	<ol style="list-style-type: none"> 1. Replace check valve if unloader bleeds constantly. <p>⚠ DANGER</p> <p>Do not remove check valve with air pressure in tank.</p>
Pressure switch not unloading	<ol style="list-style-type: none"> 1. Malfunctioning pressure switch 	<ol style="list-style-type: none"> 1. Replace pressure switch if it does not release air pressure briefly when unit shuts off. <p>⚠ DANGER</p> <p>Do not remove pressure switch with air pressure in tank.</p>
Excessive vibration	<ol style="list-style-type: none"> 1. Improper installation 	<ol style="list-style-type: none"> 1. Make sure unit is mounted on a level surface with vibration pads.
	<ol style="list-style-type: none"> 2. Loose belts 	<ol style="list-style-type: none"> 2. Replace belts. Align and tighten properly.
	<ol style="list-style-type: none"> 3. Misaligned flywheel or drive pulley 	<ol style="list-style-type: none"> 3. Align flywheel and drive pulley.
Overheating	<ol style="list-style-type: none"> 1. Compressor too small for application 	<ol style="list-style-type: none"> 1. Reduce air demand or use a compressor with more air capacity.
	<ol style="list-style-type: none"> 2. Cooling surfaces dirty 	<ol style="list-style-type: none"> 2. Clean all cooling surfaces of dirt and dust.
	<ol style="list-style-type: none"> 3. Improper cooling 	<ol style="list-style-type: none"> 3. Install compressor in an area with adequate cool dry air.

PUMP SPECIFICATIONS

Pump Model	Pump P/N	Cyl. No.	Stages
PAT24	4116091136	2	1
PAT38	4116091337	2	1
PAT49	1609402495	2	2
T39	4116090019	2	2
T29S	4116090112	2	2
B5900	4116090137	2	2
C1	1312202800	2	2
C2	1312202700	4	2

Pump Model	Cyl. Diam in. (mm)		Stroke in. (mm)	Max rpm	Oil Cap. Qt. (L)	Displacement @ max RPM	
	1st Stg	2nd Stg				CFM	L/M
PAT24	2.48 (63)	N/A	1.50 (38)	1400	0.56 (0.53)	11.71	331.59
PAT38	2.48 (63)	N/A	2.36 (60)	1400	0.91 (0.86)	18.49	523.58
PAT49	3.74 (95)	1.97 (50)	2.48 (63)	1400	0.91 (0.86)	20.40	578.00
T39	4.13 (105)	2.05 (52)	2.95 (60)	1400	1.09 (1.03)	32.02	906.63
T29S	3.74 (85)	1.97 (45)	1.97 (45)	1400	1.44 (1.36)	17.53	496.50
B5900	4.13 (105)	2.16 (55)	2.16 (55)	1400	1.72 (1.63)	23.44	663.84
C1	4.13 (105)	2.16 (55)	3.5 (89)	1000	1.31 (1.24)	27.13	768.33
C2	4.13 (105)	2.16 (55)	3.5 (89)	900	1.50 (1.42)	48.84	1382.99

Pump Model	Bolt Torque Ft.-Lbs. (NM)				
	Conrod	Head	Cylinder	Bearing Housing	Flywheel
PAT24	N/A	18-20 (24-27)	18-20 (24-27)	5-7 (7-10)	18-20 (24-27)
PAT38	N/A	18-20 (24-27)	18-20 (24-27)	5-7 (7-10)	18-20 (24-27)
PAT49	N/A	18-20 (24-27)	18-20 (24-27)	5-7 (7-10)	18-20 (24-27)
T39	20-22 (27-30)	30-33 (40-45)	16-19 (22-26)	19-22 (26-30)	34-37 (46-50)
T29S	18-20 (24-27)	18-20 (24-27)	18-20 (24-27)	5-7 (7-10)	18-20 (24-27)
B5900	18-20 (24-27)	18-20 (24-27)	18-20 (24-27)	5-7 (7-10)	18-20 (24-27)
C1	34-37 (46-50)	34-37 (46-50)	19-27 (26-37)	14-19 (19-26)	47-57 (64-77)
C2	34-37 (46-50)	34-37 (46-50)	19-27 (26-37)	14-19 (19-26)	47-57 (64-77)

TANK SPECIFICATIONS

Volume		Max Pressure		Discharge Conn.
Gal.	Liter	PSI	Bar	NPT
20H	76	150	10.345	1/4"
26V	99	150	10.345	1/4"
60V	228	170	11.724	1/2"
2X4	2X15.2	200	13.793	3/8"
2X5	2X19	200	13.793	3/8"
80H	228	200	13.793	3/4"
80V	300	200	13.793	3/4"
30H	114	200	13.793	3/4"
120V	456	200	13.793	3/4"
120H	456	200	13.793	3/4"
120D	456	200	13.793	3/4"
200D	760	200	13.793	3/4"



WARNING

Oil and moisture residue must be drained from the air receiver daily or after each use. Accumulations of oil residue in the receiver can be ignited by embers of carbon created by the heat of compression - causing an explosion, damage to property and injury to personnel.



WARNING

Do not open a manual tank drain valve on any air tank containing more than 30 PSIG of air pressure!



WARNING

Never attempt to relieve an air tank by removing a pipe plug or any other system component!

Manually Draining an Air Tank:

- Step 1)** Disconnect and lockout the compressor from the power source (electric models) or disconnect the spark plug wire from the spark plug (gas engine models).
- Step 2)** Tank(s) subjected to freezing temperatures may contain ice. Store the compressor in a heated area before attempting to drain moisture from the tank(s). Reduce the air pressure in the tank to 30 PSIG by pulling the pressure relief valve ring.
- Step 3)** Slowly open the drain valve and allow the moisture and air mixture to drain from the tank.
- Step 4)** Once the moisture has been completely drained, close the drain valve.

Recommended Air Tank Inspection Intervals

Tank Capacity	Horizontal or Vertical	Minimum Allowable Wall		Visually Inspect	Hydrostatically Inspect
		Head	Shell		
8 Gal.	Horizontal	0.096	0.094	Yearly	10 Years
8 Gal.	Twin Horz.	0.098	0.098	Yearly	10 Years
10 Gal.	Twin Horz.	0.118	0.118	Yearly	10 Years
20 Gal.	Horizontal	0.094	0.094	Yearly	10 Years
26 Gal.	Vertical	0.094	0.094	Yearly	10 Years
30 Gal.	Horizontal	0.109	0.098	Yearly	10 Years
60 Gal.	Vertical	0.094	0.094	Yearly	10 Years
80 Gal.	Vertical	0.149	0.133	Yearly	10 Years
80 Gal.	Horizontal	0.109	0.133	Yearly	10 Years
120 Gal.	Vertical	0.163	0.199	Yearly	10 Years
120 Gal. & Duplex	Horizontal	0.131	0.159	Yearly	10 Years
200 Gal. Duplex	Horizontal	0.163	0.199	Yearly	10 Years

The factory recommends that all air tanks be inspected at scheduled intervals. Refer to **Recommended Air Tank Inspection Intervals Table** for relative information.

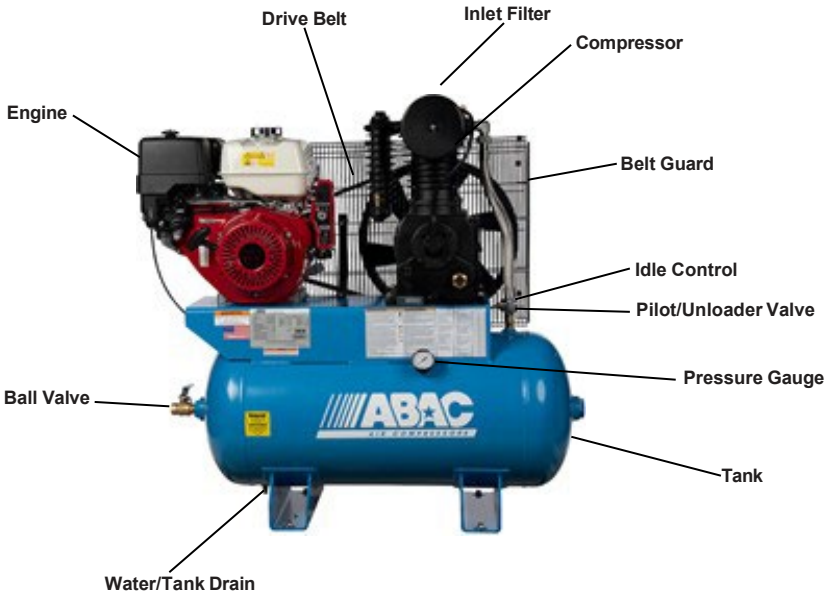
Refer to federal, state or provincial, or local codes for mandatory air tank maintenance information.

PART IDENTIFICATION

Electric



Gas Drive



Single Stage

*Note: Verify Model and Part Number of Machine Before Ordering

Change has been made to Compressor Pumps (March-April 2014)

Model Number	AB3-2160V1* 8090304281
Compressor	4116091333
Motor	2023005604
Tank	1312101060
Check Valve	1312101343
Pressure Switch	1312100455
Safety Valve	1312100005
Pressure Gauge	2025065900
Discharge Line	1312101047
Inlet Filter	2236111635
Tank Drain	1312100360
Belt Guard (front)	2236115371
Belt Guard (back)	2236115372
Drive Pulley	1312101070
Drive Belt	2024200316
Unloader Line	1312100026
Power Cord	N/A
Wheel	N/A
Handle	N/A

Two Stage Electric

Model Number	AB5-2160V4 8090304521	AB5-2180V4NS 8090304554	AB5-2180V4 8090304539	AB5-2180VP 8090304299	AB5-4380VP 8090304356	AB5-2180VFFF 8090304315
Pump	1609402496	1609402496	1609402496	4116090019	4116090019	4116090019
Motor	2023000811	2023000811	2023000868	2023000868	1312101602	2023000868
Tank	2023106749	2023106700	2023106700	1312204700	1312204700	1312204700
Check Valve	2023913502	2023913502	2023913502	1312100169	1312100169	1312100169
Pressure Switch	2023738400	2023738400	2023738404	1312100570	1312100570	1312100570
Safety Valve	9710533300	9710533300	9710533300	9710533300	9710533300	9710533300
Pressure Gauge	2025065900	2025065900	2025065900	1312100378	1312100378	1312100378
Discharge Line	2023206102	2023206101	2023206101	1312100198	1312100198	1312100198
Ball Valve	1312100162	2023913804	2023913804	1312100163	1312100163	1312100163
Inlet Filter	1129705841	1129705841	1129705841	1312100374	1312100374	1312100374
Tank Drain	1312100360	1312100360	1312100360	1312100360	1312100360	1312100360
Belt Guard	2021115700	1312101097	1312101097	1312101097	1312101097	1312101097
Drive Pulley	1312100443	1312100443	2024206600	1312100422	1312100422	1312100422
Drive Belt	2024200328	1312100139	1312100141	1312100140	1312100140	1312100140
Magnetic Starter (230V)	N/A	N/A	2024002103	2024002103	N/A	2024002103
Magnetic Starter (460V)	N/A	N/A	N/A	N/A	2024002105	N/A
Low Oil Level Switch	N/A	N/A	N/A	N/A	N/A	1312101285
Auto Tank Drain	N/A	N/A	N/A	N/A	N/A	1312100110

Model Number	AB5-4380VFFF 8090304364	AB7-2180V 8090304398	AB7-2180HS 8090304372	AB7-4380VS 8090304489	AB7-4380HS 8090303689	AB7-2180VFF 8090304414
Pump	4116090019	4116090019	4116090019	4116090019	4116090019	4116090019
Motor	1312101602	1312100400	1312100400	1312101601	1312101601	1312100400
Tank	1312204700	1312204700	1312203400	1312204700	1312203400	1312204700
Check Valve	1312100169	1312100169	1312100171	1312100169	1312100171	1312100169
Pressure Switch	1312100570	1312100570	1312100570	1312100570	1312100570	1312100570
Safety Valve	9710533300	9710533300	9710533300	9710533300	9710533300	9710533300
Pressure Gauge	1312100378	1312100378	1312100378	1312100378	1312100378	1312100378
Discharge Line	1312100198	1312100198	2014705166	1312100198	2023206125	1312100198
Ball Valve	1312100163	1312100163	1312100163	1312100163	1312100163	1312100163
Inlet Filter	1312100374	1312100374	1312100374	1312100374	1312100374	1312100374
Tank Drain	1312100360	1312100360	1312100360	1312100360	1312100360	1312100360
Belt Guard	1312101097	1312101097	1312101097	1312101097	1312101097	1312101097
Drive Pulley	1312100422	1312100420	1312100420	1312100420	1312100420	1312100420
Drive Belt	1312100140	1312100139	1312100139	1312100139	1312100139	1312100139
Magnetic Starter (230V)	N/A	2024002100	2024002100	N/A	N/A	2024002100
Magnetic Starter (460V)	2024002105	N/A	N/A	2024002105	2024002105	N/A
Low Oil Level Switch	1312101285	N/A	N/A	N/A	N/A	1312101285
Auto Tank Drain	1312100110	N/A	N/A	N/A	N/A	1312100110

Model Number	AB5-2160V4 8090304521	AB5-2180V4NS 8090304554	AB5-2180V4 8090304539	AB5-2180VP 8090304299	AB5-4380VP 8090304356	AB5-2180VFFF 8090304315
Pump	1609402496	1609402496	1609402496	4116090019	4116090019	4116090019
Motor	2023000811	2023000811	2023000868	2023000868	1312101602	2023000868
Tank	2023106749	2023106700	2023106700	1312204700	1312204700	1312204700
Check Valve	2023913502	2023913502	2023913502	1312100169	1312100169	1312100169
Pressure Switch	2023738400	2023738400	2023738404	1312100570	1312100570	1312100570
Safety Valve	9710533300	9710533300	9710533300	9710533300	9710533300	9710533300
Pressure Gauge	2025065900	2025065900	2025065900	1312100378	1312100378	1312100378
Discharge Line	2023206102	2023206101	2023206101	1312100198	1312100198	1312100198
Ball Valve	1312100162	2023913804	2023913804	1312100163	1312100163	1312100163
Inlet Filter	1129705841	1129705841	1129705841	1312100374	1312100374	1312100374
Tank Drain	1312100360	1312100360	1312100360	1312100360	1312100360	1312100360
Belt Guard	2021115700	1312101097	1312101097	1312101097	1312101097	1312101097
Drive Pulley	1312100443	1312100443	2024206600	1312100422	1312100422	1312100422
Drive Belt	2024200328	1312100139	1312100141	1312100140	1312100140	1312100140
Magnetic Starter (230V)	N/A	N/A	2024002103	2024002103	N/A	2024002103
Magnetic Starter (460V)	N/A	N/A	N/A	N/A	2024002105	N/A
Low Oil Level Switch	N/A	N/A	N/A	N/A	N/A	1312101285
Auto Tank Drain	N/A	N/A	N/A	N/A	N/A	1312100110

Gas Drive

Model Number	AB13-30GH 8090304620
Compressor	1312100706
Engine	1312100223
Tank	2023106770
Unloader Valve	1312101115
Safety Valve	9710533300
Pressure Gauge	1312100378
Discharge Line	1312101101
Ball Valve	1312100163
Inlet Filter	1312100374
Tank Drain	1312100360
Belt Guard	1312101093
Belt	2024200423
Unloader Line	N/A
Idle Control	N/A
Drive Pulley	1312100711

Gas Drive - Cast Iron Units

Model Number	ABC11-30GH 8090303697	ABC13-30GH 8090303705	ABC14-30GK 8090303713	ABC16-30GV 8090304075
Compressor	1312100706	1312100706	1312100706	1312202700
Engine	1312100223	1312100224	1312101114	1312100731
Tank	1312204800	2023106770	2023106770	1312101116
Unloader Valve	1312101115	1312101115	1312101115	1312100497
Safety Valve	9710533300	9710533300	9710533300	9710533300
Pressure Gauge	1312100845	1312100378	1312100378	1312100378
Discharge Line	1312101101	1312101101	1312101101	1312100720
Ball Valve	1312100163	1312100163	1312100163	1312100162
Inlet Filter	1312100374	1312100374	1312100374	1312100374
Tank Drain	1312100361	1312100360	1312100360	1312100360
Belt Guard	1312101093	1312101093	1312101093	1312204300
Belt	1312100993	2024200425	2024200425	2024200435
Unloader Line	N/A	N/A	N/A	N/A
Idle Control	N/A	N/A	1312100099	1312100741
Drive Pulley	1312100711	1312101040	1312101040	1312100711

Duplex

Model Number	AB5-21120D 8090304224	AB5-23120D 8090304232	AB5-43120D 8090304240	AB5-43120D 8090304240	AB7-23120D 8090304265
Compressor	4116090019	4116090019	4116090019	4116090019	4116090019
Motor	2023000868	1312101602	1312101602	1312100400	1312101601
Tank	1312203500	1312203500	1312203500	1312203500	1312203500
Check Valve	1312100171	1312100171	1312100171	1312100171	1312100171
Pressure Switch	1312100570	1312100570	1312100570	1312100570	1312100570
Safety Valve	9710533300	9710533300	9710533300	9710533300	9710533300
Pressure Gauge	1312100378	1312100378	1312100378	1312100378	1312100378
Discharge Line	1312100212 (R) 1312100211 (L)	1312100212 (R) 1312100211 (L)	1312100212 (R) 1312100211 (L)	1312100212 (R) 1312100211 (L)	1312100212 (R) 1312100211 (L)
Ball Valve	1312100163	1312100163	1312100163	1312100163	1312100163
Inlet Filter	1312100374	1312100374	1312100374	1312100374	1312100374
Filter Element	FE001	FE001	FE001	FE001	FE001
Tank Drain	1312100360	1312100360	1312100360	1312100360	1312100360
Belt Guard	1312101144 (R) 1312101097 (L)	1312101144 (R) 1312101097 (L)	1312101144 (R) 1312101097 (L)	1312101144 (R) 1312101097 (L)	1312101144 (R) 1312101097 (L)
Drive Belt	1312100140	1312100140	1312100140	1312100139	1312100139
Drive Pulley	1312100422	1312100422	1312100422	1312100420	1312100420
Unloader Line	N/A	N/A	N/A	N/A	N/A
Panel Assembly	1312208700	1312208700	1312208701	1312208700	1312208700
Magnetic Starter	1312101187	1312101187	1312101192	1312101187	1312101187
Alternator	1312101185	1312101185	1312101185	1312101185	1312101185
AB7-43120D 8090304273					
Compressor	4116090019				
Motor	1312101601				
Tank	1312203500				
Check Valve	1312100171				
Pressure Switch	1312100570				
Safety Valve	9710533300				
Pressure Gauge	1312100378				
Discharge Line	1312100212 (R) 1312100211 (L)				
Ball Valve	1312100163				
Inlet Filter	1312100374				
Filter Element	FE001				
Tank Drain	1312100360				
Belt Guard	1312101144 (R) 1312101097 (L)				
Drive Belt	1312100139				
Drive Pulley	1312100420				
Unloader Line	N/A				
Panel Assembly	1312208701				
Magnetic Starter	1312101192				
Alternator	1312101185				

AB-QP

Model Number	AB5-2180VQP 8090304307	AB5-2380VQP 8090304331	AB7-2180VQP 8090304406	AB7-2380VQP 8090304448
Compressor	4116090019	4116090019	4116090019	4116090019
Motor	2023000868	1312101602	1312100400	1312101601
Tank	1312204700	1312204700	1312204700	1312204700
Check Valve	1312100169	1312100169	1312100169	1312100169
Pressure Switch	1312100570	1312100570	1312100570	1312100570
Safety Valve	9710533300	9710533300	9710533300	9710533300
Pressure Gauge	1312100378	1312100378	1312100378	1312100378
Magnetic Starter	2024002103	2024002101	2024002100	2024002102
Canopy	1312202180	1312202180	1312202180	1312202180
Tank Drain	1312100110	1312100110	1312100110	1312100110
Ball Valve	1312100163	1312100163	1312100163	1312100163
Discharge Line	1312100198	1312100198	1312100198	1312100198
Inlet Filter	1312100097	1312100097	1312100097	1312100097
Low Oil Switch	1312101285	1312101285	1312101285	1312101285
Blower	1312100088	1312100088	1312100088	1312100088
Belt Guard	1312101097	1312101097	1312101097	1312101097
Belt	1312100140	1312100140	1312100139	1312100139
Unloader Line	N/A	N/A	N/A	N/A
Drive Pulley	1312100422	1312100422	1312100420	1312100420
High Temp Switch	1312100089	1312100089	1312100089	1312100089

AB-C (Iron Series)

Two Stage Electric (AB-C) - Standard

Model Number	ABC5-2180V 8090303796	ABC5-4380V 8090303838	ABC7-2180V 8090303879	ABC7-4380V 8090303911	ABC7-2180V2 8090304141
Compressor	1312100706	1312100706	1312100706	1312100706	1312202700
Motor	2023000868	1312101602	1312100400	1312101601	2023000986
Belt Guard	1312100982	1312100982	1312100982	1312100982	1312204400
Discharge Line (Top)	1312100994	1312100994	1312100994	1312100994	1312100717
Discharge Line (Btm)	N/A	N/A	N/A	N/A	N/A
Pressure Switch	1312100570	1312100570	1312100570	1312100570	1312100570
Ball Valve	1312100163	1312100163	1312100163	1312100163	1312100163
Unloader Line	1312100026	1312100026	1312100026	1312100026	1312100026
Safety Valve	9710533300	9710533300	9710533300	9710533300	9710533300
Pressure Gauge	1312100378	1312100378	1312100845	1312100378	1312100378
Tank	1312204700	1312204700	1312204700	1312204700	1312101251
Tank Drain	1312100360	1312100360	1312100360	1312100360	1312100360
Magnetic Starter (230V)	2024002103	N/A	1312100662	N/A	2024002100
Magnetic Starter (460V)	N/A	2024002105	N/A	2024002105	N/A
Drive Pulley	2024207500	2024207500	1312100938	1312100938	1312101819
Bushing	1312100445	1312100445	1312100445	1312100445	1312100446
Belt	2024200423	2024200423	1312100939	1312100939	1312100724
Check Valve	1312100169	1312100169	1312100171	1312100169	1312100169
Model Number	ABC7-4380V2 8090304182	ABC10-43120V 8090304018	ABC10-43120H 8090303994	ABC5-2380V 8090303812	ABC5-5380V 8090303853
Compressor	1312202700	1312202700	1312202700	1312100706	1312202700
Motor	2023000928	1312101600	1312101600	1312101602	1312101605
Belt Guard	1312204400	1312100983	1312100983	1312100982	1312100982
Discharge Line (Top)	1312100717	1312100717	1312100717	1312100994	1312100994
Discharge Line (Btm)	N/A	N/A	N/A	N/A	N/A
Pressure Switch	1312100570	1312100163	1312100163	1312100570	1312100570
Ball Valve	1312100163	1312100570	1312100570	1312100163	1312100163
Unloader Line	1312100026	1312100026	1312100026	1312100026	1312100026
Safety Valve	9710533300	9710533300	9710533300	9710533300	9710533300
Pressure Gauge	1312100028	1312100378	1312100378	1312100378	1312100378
Tank	1312101251	1312203800	1312203900	1312204700	1312204700
Tank Drain	1312100360	1312100360	1312100360	1312100360	1312100360
Magnetic Starter (230V)	N/A	N/A	N/A	2024002101	N/A
Magnetic Starter (460V)	1312100657	2024002107	2024002107	N/A	2024002105
Drive Pulley	1312100712	1312101819	1312100713	2024207500	2024207500
Bushing	1312100446	1312100446	1312100446	1312100445	1312100445
Belt	1312100722	1312100724	2024200435	2024200423	2024200423
Check Valve	1312100172	1312100172	1312100172	1312100169	1312100169
Model Number	ABC7-2380V 8090303895	ABC7-5380V 8090303937	ABC10-23120H 8090303952	ABC10-23120V 8090303978	ABC10-53120V 8090304059
Compressor	1312100706	1312100706	1312202700	1312202700	1312202700
Motor	1312101601	1312101604	1312101600	1312101600	1312101603
Belt Guard	1312100982	1312100982	1312100983	1312100983	1312100983
Discharge Line (Top)	1312100994	1312100994	1312100717	1312100717	1312100717
Discharge Line (Btm)	N/A	N/A	N/A	N/A	N/A
Pressure Switch	1312100570	1312100570	1312100570	1312100570	1312100570
Ball Valve	1312100163	1312100163	1312100163	1312100163	1312100163
Unloader Line	1312100026	1312100026	1312100026	1312100026	1312100026
Safety Valve	9710533300	9710533300	9710533300	9710533300	9710533300
Pressure Gauge	1312100378	1312100378	1312100378	1312100378	1312100378
Tank	1312204700	1312204700	1312100972	1312100970	1312100970
Tank Drain	1312100360	1312100360	1312100360	1312100360	1312100360
Magnetic Starter (230V)	2024002102	N/A	2024002109	2024002109	N/A
Magnetic Starter (460V)	N/A	2024002110	N/A	N/A	2024002108
Drive Pulley	1312100938	1312100938	1312100713	1312100713	1312100713
Bushing	1312100445	1312100445	1312100446	1312100446	1312100446
Belt	1312100939	1312100939	2024200435	2024200435	2024200435
Check Valve	1312100169	1312100169	1312100172	1312100172	1312100172
Model Number	ABC7-2380V2 8090304166				
Compressor	1312202700				
Motor	2023000928				
Belt Guard	1312204400				
Discharge Line (Top)	1312100717				
Discharge Line (Btm)	N/A				
Pressure Switch	1312100570				
Ball Valve	1312100163				
Unloader Line	1312100026				
Safety Valve	9710533300				
Pressure Gauge	1312100028				
Tank	1312100975				
Tank Drain	1312100360				
Magnetic Starter (230V)	2024002102				
Magnetic Starter (460V)	N/A				
Drive Pulley	1312101819				
Bushing	1312100446				
Belt	1312100724				
Check Valve	1312100172				

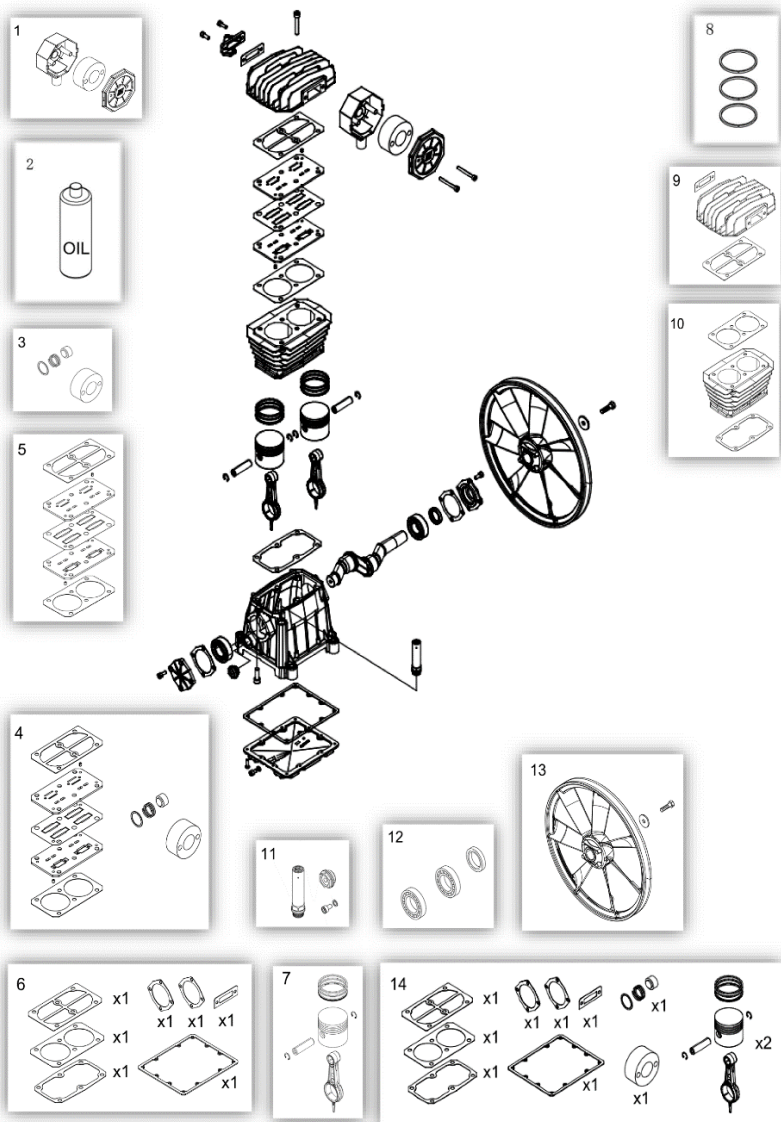
Two Stage Electric (AB-C) - Premium

Model Number	ABC5-2180VFFS 8090303804	ABC5-4380VFF 8090303846	ABC7-2180VFF 8090303887	ABC7-4380VFF 8090303929	ABC7-2180V2FF 8090304158	ABC7-4380V2FF 8090304190
Compressor	1312100706	1312100706	1312100706	1312100706	1312202700	1312202700
Motor	2023000868	1312101602	1312100400	1312101601	2023000966	2023000928
Belt Guard	1312100982	1312100982	1312100982	1312100982	1312204400	1312204400
Discharge Line (Top)	1312101101	1312101101	1312101101	1312101101	1312101102	1312101102
Discharge Line (Btm)	1312101102	1312101102	1312101102	1312101102	1312101102	1312101102
Pressure Switch	1312100570	1312100570	1312100570	1312100570	1312100570	1312100570
Ball Valve	1312100163	1312100163	1312100163	1312100163	1312100163	1312100163
Unloader Line	1312100026	1312100026	1312100026	1312100026	1312100026	1312100026
Safety Valve	9710533300	9710533300	9710533300	9710533300	9710533300	9710533300
Pressure Gauge	1312100378	1312100378	1312100378	1312100378	1312100028	1312100028
Tank	1312204700	1312204700	1312204700	1312204700	1312101251	1312101251
Tank Drain	1312312204	1312312204	1312312204	1312312204	1312312204	1312312204
Magnetic Starter (230V)	2024002103	N/A	2024002100	N/A	2024002100	N/A
Magnetic Starter (460V)	N/A	2024002105	N/A	2024002105	N/A	2024002107
Drive Pulley	2024207500	2024207500	1312100938	1312100938	1312101819	1312101819
Bushing	1312100445	1312100445	1312100445	1312100445	1312100446	1312100446
Belt	2024200423	2024200423	1312100939	1312100939	1312100724	1312100724
Check Valve	1312100167	1312100167	1312100167	1312100167	1312100167	1312100167
Aftercooler	1312100611	1312100611	1312100611	1312100611	1312100611	1312100611
Low Oil Switch	1312101285	1312101285	1312101285	1312101285	1312101285	1312101285
LOS - Housing	1312101232	1312101232	1312101232	1312101232	1312101232	1312101232
ABC5-5380VFF						
Model Number	ABC10-43120VFF 8090304026	ABC10-43120HFF 8090304000	ABC5-2380VFF 8090303820	ABC5-5380VFF 8090303861	ABC7-2380VFF 8090303903	ABC10-23120HFF 8090303960
Compressor	1312202700	1312202700	1312100706	1312100706	1312100706	1312202700
Motor	1312101600	1312101600	1312101602	1312101605	1312101601	1312101600
Belt Guard	1312100983	1312100983	1312100982	1312100982	1312100982	1312100983
Discharge Line (Top)	1312101102	1312101101	1312101101	1312101102	1312101101	1312101101
Discharge Line (Btm)	1312101102	1312101102	1312101102	1312101102	1312101102	1312101102
Pressure Switch	1312100570	1312100570	1312100570	1312100570	1312100570	1312100570
Ball Valve	1312100163	1312100163	1312100163	1312100163	1312100163	1312100163
Unloader Line	1312100026	1312100026	1312100026	1312100026	1312100026	1312100026
Safety Valve	9710533300	9710533300	9710533300	9710533300	9710533300	9710533300
Pressure Gauge	1312100378	1312100378	1312100378	1312100378	1312100378	1312100378
Tank	1312203800	1312203900	1312204700	1312100969	1312204700	1312100972
Tank Drain	1312312204	1312312204	N/A	N/A	N/A	N/A
Magnetic Starter (230V)	N/A	N/A	2024002101	N/A	2024002102	2024002109
Magnetic Starter (460V)	2024002107	2024002107	N/A	2024002106	N/A	N/A
Drive Pulley	1312100713	1312100713	2024207500	2024207500	1312100938	1312100713
Bushing	1312100446	1312100446	1312100445	1312100445	1312100446	1312100446
Belt	2024200435	2024200435	2024200423	2024200423	1312100939	2024200435
Check Valve	1312100167	1312100172	1312100167	1312100167	1312100167	1312100172
Aftercooler	1312100611	1312100611	1312100611	1312100611	1312100611	1312100611
Low Oil Switch	1312101285	1312101285	1312101285	1312101285	1312101285	1312101285
LOS - Housing	1312101232	1312101232	1312101232	1312101232	1312101232	1312101232
ABC10-53120H						
Model Number	ABC10-53120VFF 8090303986	ABC10-53120H 8090304034	ABC10-53120VFF 8090304067	ABC7-2380V2FF 8090304174		
Compressor	1312202700	1312202700	1312202700	1312202700		
Motor	1312101600	1312101603	1312101603	2023000928		
Belt Guard	1312100983	1312100983	1312100983	1312204400		
Discharge Line (Top)	N/A	1312101101	N/A	N/A		
Discharge Line (Btm)	1312101102	1312101102	1312101102	1312101102		
Pressure Switch	1312100570	1312100570	1312100570	1312100570		
Ball Valve	1312100163	1312100163	1312100163	1312100163		
Unloader Line	1312100026	1312100026	1312100026	1312100026		
Safety Valve	9710533300	9710533300	9710533300	9710533300		
Pressure Gauge	1312100378	1312100378	1312100378	1312100028		
Tank	1312100970	1312100972	1312203800	1312100975		
Tank Drain	N/A	N/A	N/A	N/A		
Magnetic Starter (230V)	2024002109	N/A	N/A	2024002102		
Magnetic Starter (460V)	N/A	2024002108	2024002108	N/A		
Drive Pulley	1312100713	1312100713	1312100713	1312101819		
Bushing	1312100446	1312100446	1312100446	1312100446		
Belt	2024200435	2024200435	2024200435	1312100724		
Check Valve	1312100167	1312100172	1312100167	1312100167		
Aftercooler	1312100611	1312100611	1312100611	1312100611		
Low Oil Switch	1312101285	1312101285	1312101285	1312101285		
LOS - Housing	1312101232	1312101232	1312101232	1312101232		

Duplex (AB-C)

Model Number	ABC5-21120HD 8090303721	ABC5-23120HD 8090303739	ABC5-43120HD 8090303747	ABC7-21120HD 8090303754	ABC7-23120HD 8090303762	ABC7-43120HD 8090303770
Compressor	1312202800	1312202800	1312202800	1312202800	1312202800	1312202800
Motor	2023000868	1312101602	1312101602	1312100400	1312101601	1312101601
Belt Guard	1312204300 (R) 1312204400 (L)	1312204300 (R) 1312204400 (L)	1312204300 (R) 1312204400 (L)	1312204300 (R) 1312204400 (L)	1312204300 (R) 1312204400 (L)	1312204300 (R) 1312204400 (L)
Discharge Line (Top)	1312100716 (R) 1312100719 (L)	1312100716 (R) 1312100719 (L)	1312100716 (R) 1312100719 (L)	1312100716 (R) 1312100719 (L)	1312100716 (R) 1312100719 (L)	1312100716 (R) 1312100719 (L)
Discharge Line (Btm)	N/A	N/A	N/A	N/A	N/A	N/A
Ball Valve	1312100163	1312100163	1312100163	1312100163	1312100163	1312100163
Pressure Switch	1312100570	1312100570	1312100570	1312100570	1312100570	1312100570
Unloader Line	1312100026	1312100026	1312100026	1312100026	1312100026	1312100026
Safety Valve	9710533300	9710533300	9710533300	9710533300	9710533300	9710533300
Pressure Gauge	1312100028	1312100028	1312100028	1312100028	1312100028	1312100028
Tank	1312208202	1312208202	1312208202	1312208202	1312208202	1312208202
Tank Drain	1312100360	1312100360	1312100360	1312100360	1312100360	1312100360
Drive Pulley	2024207500	2024207500	2024207500	1312100938	1312100938	1312100938
Bushing	1312100445	1312100445	1312100445	1312100445	1312100445	1312100445
Belt	1312100724	1312100724	1312100724	1312100721	1312100721	1312100721
Check Valve	1312100171	1312100171	1312100171	1312100171	1312100171	1312100171
Panel Assembly	1312208700	1312208700	1312208701	1312208700	1312208700	1312208701
Magnetic Starter	1312101187	1312101187	1312101192	1312101187	1312101187	1312101192
Controller	1312101185	1312101185	1312101185	1312101185	1312101185	1312101185
Model Number	ABC10-23120HD 8090304083	ABC10-43120HD 8090304109	ABC10-53120H 8090304034	ABC10-23200HD 8090304091	ABC10-43200HD 8090304117	
Compressor	1312202700	1312202700	1312202700	1312202700	1312202700	
Motor	1312101600	1312101600	1312101603	1312101600	1312101600	
Belt Guard	1312204300 (R) 1312204400 (L)	1312204300 (R) 1312204400 (L)	1312100983	1312204300 (R) 1312204400 (L)	1312204300 (R) 1312204400 (L)	
Discharge Line (Top)	1312100717 (R) 1312100717 (L)	1312100717 (R) 1312100717 (L)	1312100717 (R) 1312100717 (L)	1312100717 (R) 1312100717 (L)	1312100717 (R) 1312100717 (L)	
Discharge Line (Btm)	N/A	N/A	N/A	N/A	N/A	
Ball Valve	1312100163	1312100163	1312100163	1312100163	1312100163	
Pressure Switch	1312100570	1312100570	1312100570	1312100570	1312100570	
Unloader Line	1312100026	1312100026	1312100026	1312100026	1312100026	
Safety Valve	9710533300	9710533300	9710533300	9710533300	9710533300	
Pressure Gauge	1312100028	1312100028	1312100378	1312100028	1312100028	
Tank	1312208202	1312208202	1312100972	1312208300	1312208300	
Tank Drain	1312100360	1312100360	1312100360	1312100360	1312100360	
Drive Pulley	1312100713	1312100713	1312100713	1312100713	1312100713	
Bushing	1312100446	1312100446	1312100446	1312100446	1312100446	
Belt	1312100723	1312100723	2024200435	1312100723	1312100723	
Check Valve	1312100172	1312100172	1312100172	1312100172	1312100172	
Panel Assembly	1312208700	1312208701	N/A	1312208701	1312208701	
Magnetic Starter	1312101187	1312101192	2024002108	1312101192	1312101192	
Controller	1312101185	1312101185	N/A	1312101185	1312101185	

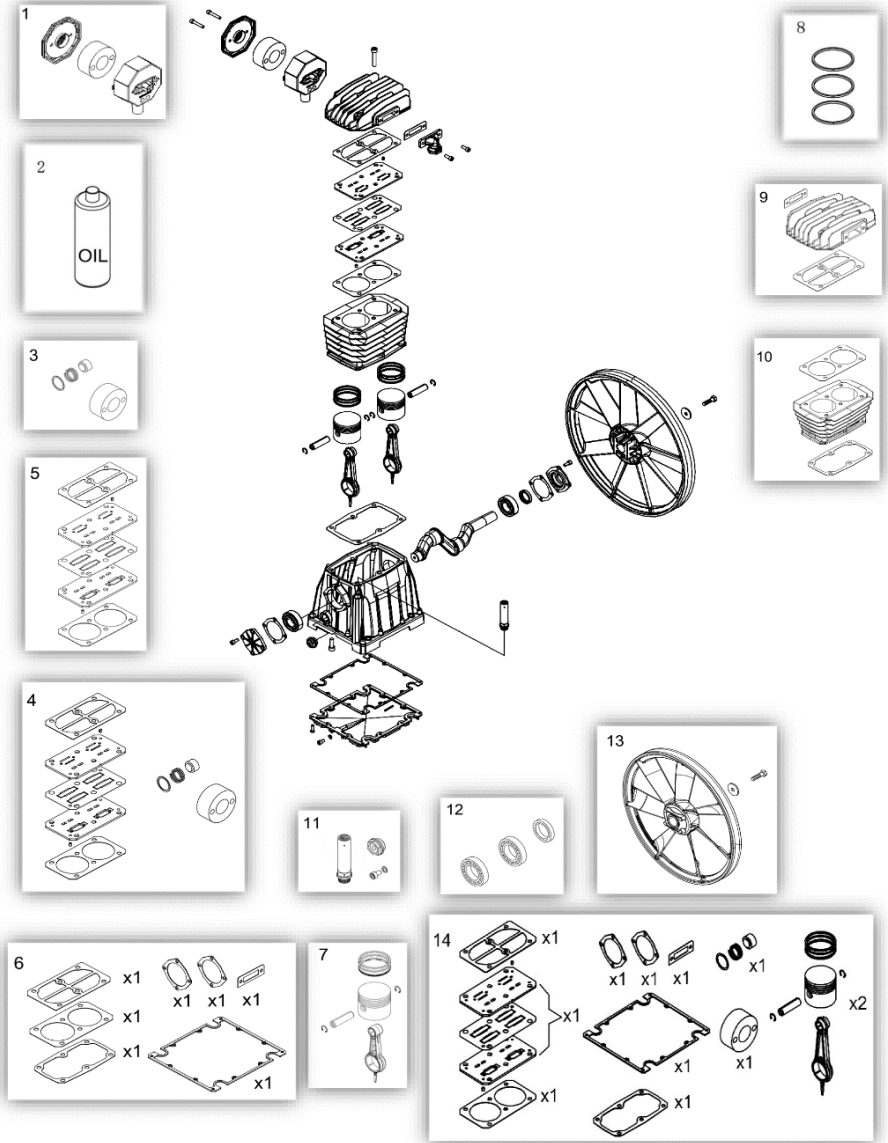
Compressor Pump 4116091336 (PAT24)



Item Number	Description	Part Numbers
Regular Maintenance Parts and Kits		
1	Complete Air filter including filter element	2236112735
2	Oil Attair 150	1630054300
Preventive Maintenance Kits		
3	e-kit PAT24	1129706362
4	Performance Kit PAT24	1129706367
5	Valve Plate Kit	2236112518
6	Gasket Kit	1129706287
7	Piston Kit	2236111619

Item Number	Description	Part Numbers
Preventive Maintenance Kits (Continued)		
8	Piston Rings Kit	1129705098
Repairing Kits and Parts		
9	Head Kit	2901325044
10	Cylinder Kit	2236112434
11	Oil Kit	1129706370
12	Bearing Kit	1129706373
13	Flywheel Kit	1129707385
14	Heavy-Duty Kit PAT24	1129706372

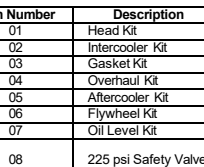
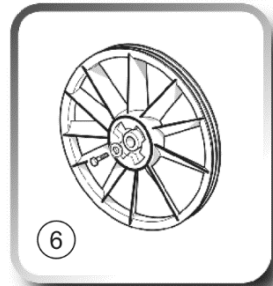
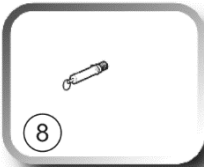
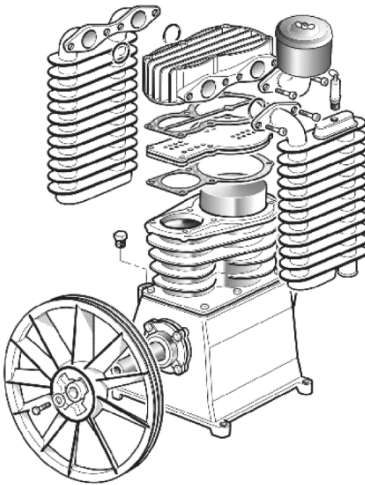
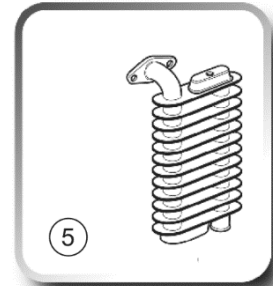
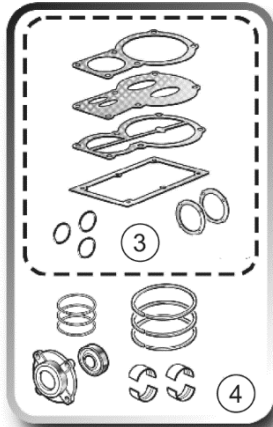
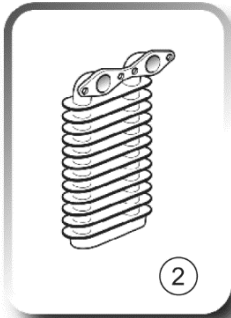
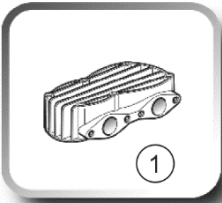
Compressor Pump 4116091337 (PAT38)



Item Number	Description	Part Numbers
Regular Maintenance Parts and Kits		
1	Complete Air filter including filter element	2236112735
2	Oil	2901160600
Preventive Maintenance Kits		
3	500h e-kit PAT38	1129706368
4	1000h Performance Kit PAT38	1129706371
5	Valve Plate Kit	2236112518
6	Gasket Kit	1129706288
7	Piston Kit	2236111620

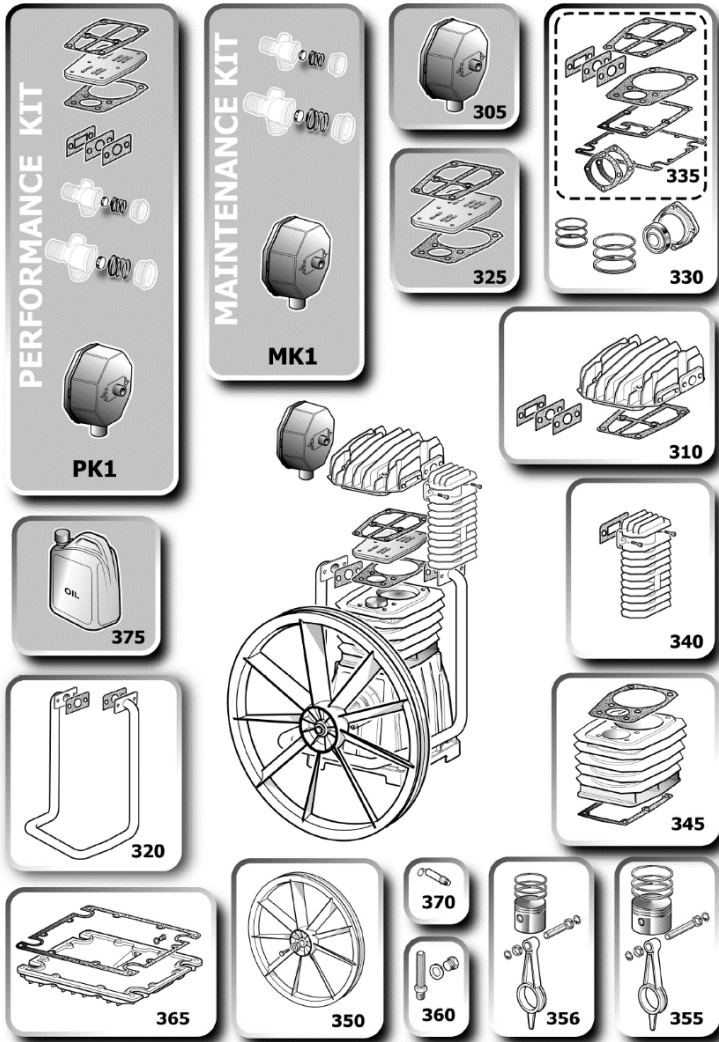
Item Number	Description	Part Numbers
Preventive Maintenance Kits (Continued)		
8	Piston Rings Kit	1129705098
Repairing Kits and Parts		
9	Head Kit	1129706482
10	Cylinder Kit	2236112435
11	Oil Kit	1129706370
12	Bearing Kit	1129706373
13	Flywheel Kit	1129706483
14	2000h Heavy-Duty Kit PAT38	1129706369

T39 (4116090019)



Item Number	Description	Part Numbers
01	Head Kit	2901324971
02	Intercooler Kit	2901324972
03	Gasket Kit	1310711137
04	Overhaul Kit	1310711168
05	Aftercooler Kit	2901324973
06	Flywheel Kit	6229018800
07	Oil Level Kit	2901324954
08	225 psi Safety Valve	1312100456

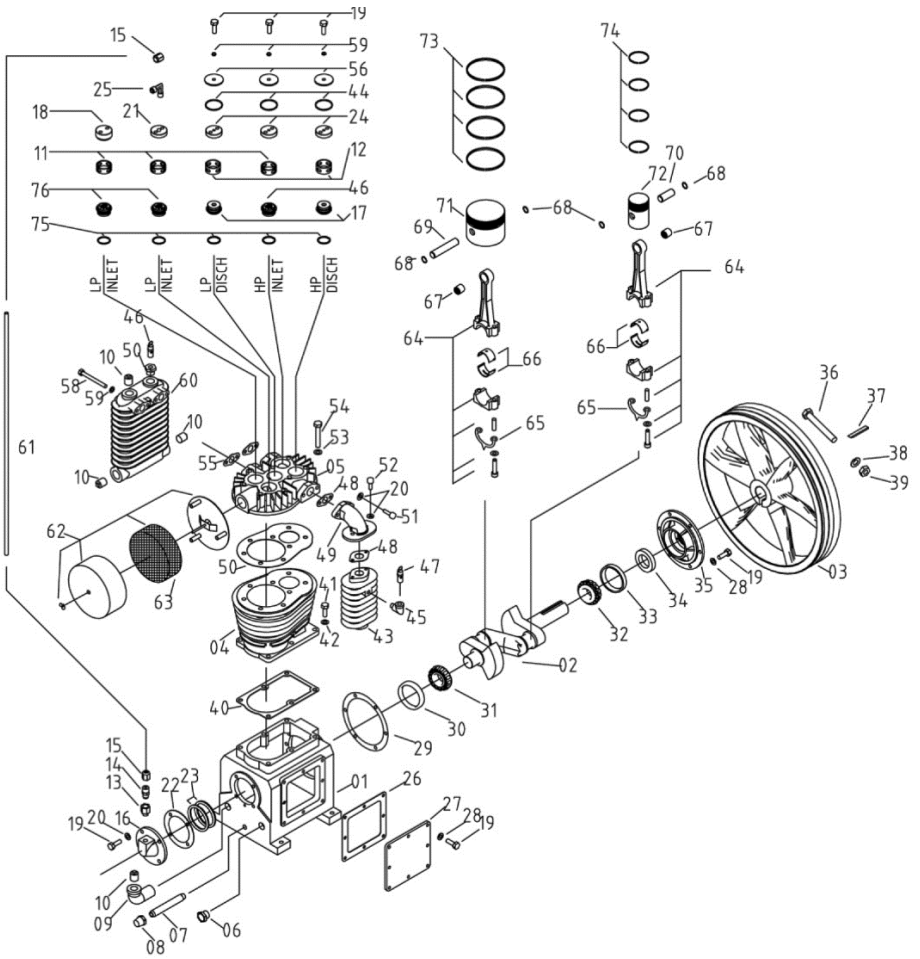
Item Number	Description	Part Numbers
	Filter Assembly	1312100374*
	Filter Element	FE001*
	Oil Sight Glass	2236102992
	Flywheel Bolt	6211848500
	Flywheel Washer	6214242700
	Valve Kit	2901324723
*QP Models	Filter Assembly Filter Element	1312100097 FR004



Item Number	Description	Part Numbers
305	Filter Element	2236113754
310	Cylinder Head Kit	2901320419
320	Intercooler Kit	2901320421
325	Valve Plate Kit	2236113917
330	Bearing and Ring Overhaul Kit	2901320420
335	Gasket Kit	8973037937
340	Aftercooler Kit	2236112794
345	Cylinder Assembly	2236113914
350	Flywheel Kit	2901325050

Item Number	Description	Part Numbers
355	Conrod-Piston Assembly - LP	1129704957
356	Conrod-Piston Assembly - HP	1129704958
360	Oil Level Kit	2901325049
365	Crankcase Bottom Kit	2236112438
370	100 PSI Safety Valve Kit	1127190235
375	Oil	6215716300
MK1	Maintenance Kit	8973037941
PK1	Performance Kit	8973037939

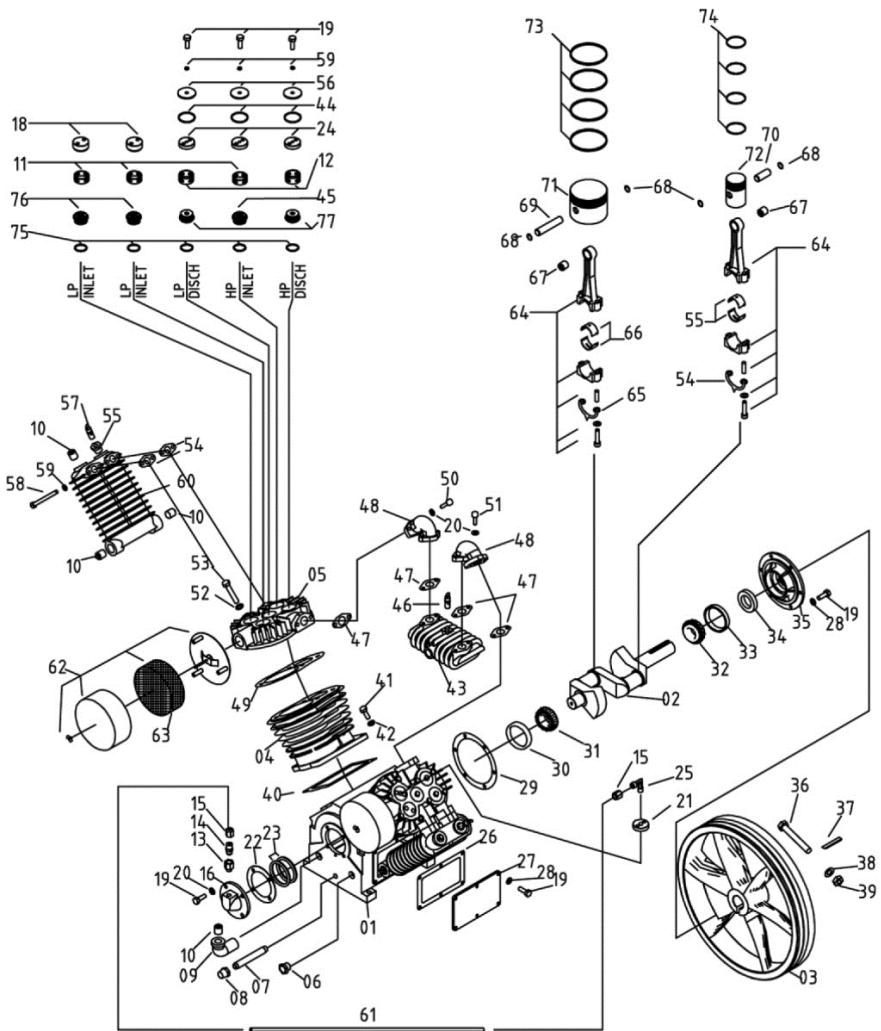
CA1 (1312202800)



CA1 (1312202800) (Continued)

Item	Description	Qty	Part #
1	Crankcase	1	1312100876
2	Crank Shaft	1	1312100932
3	Fly Wheel	1	1312100884
4	Cylinder	1	1312100880
5	Head	1	1312100878
6	Oil Sight Glass	1	1312100903
7	Oil Drain Pipe	1	1312100859
8	Oil Drain Pipe Cap	1	1312100861
9	Oil Fill Elbow	1	1312100933
10	Plug	4	1312100866
11	Spacer - Inlet Valve	2	1312100893
12	Spacer Discharge Valve	3	1312100894
13	Breather Body	1	1312100934
14	Copper Connector	1	1312100860
15	Copper Nut	2	1312100856
16	Cover-Centrifugal Unloader	1	1312100899
17	Valve Assy HP/LP Discharge	2	1312100892
18	Retainer Inlet Valve	1	1312100898
19	Capscrew-Hex M8x25	21	0147132503
20	Lockwasher 8	8	0333222500
21	Retainer Inlet Valve	1	1312100895
22	Gasket Rear Cap	1	1312100920
23.1	Shim 0.20 Brg. Adj.	1	1312100930
23.2	Shim 0.10 Brg. Adj.	2	1312100929
24	Retainer Discharge Valve	3	1312100896
25	Copper Elbow	1	1312100857
26	Gasket Side Cover	1	1312100916
27	Cover Crankcase Side	1	1312100858
28	Copper Gasket	14	1312100921
29	Gasket Front Cap	1	1312100915
30	Bearing Cap Rear	1	1312100909
31	Bearing Cone Rear	1	1312100908
32	Bearing Cone Front	1	1312100906
33	Bearing Cap Front	1	1312100907
34	Seal-Shaft	1	1312100911
35	Cap Front	1	1312100868
36	Capscrew-Hex M16x120	1	0147149203
37	Key Fly Wheel C1	1	1312100928
38	Lockwasher 16	1	0333224300
39	Nut - Hex M16	1	0261111403
40	Gasket - Cylinder to Crankcase	1	1312100914

Item	Description	Qty	Part #
41	Capscrew-Hex M10x30	6	0147136303
42	Copper Gasket 10	6	1312100923
43	Aftercooler	1	1312100875
44	Gasket Valve Cover	3	1312100919
45	Elbow - Street	2	1312100865
46	Valve Assy HP Inlet	1	1312100891
47	Safety Valve 250 psi	1	1312100862
48	Gasket Aftercooler	2	1312100918
49	Elbow Aftercooler	1	1312100873
50	Gasket - Cylinder Head	1	1312100913
51	Capscrew - Skt HD M8x30	2	0211132603
52	Capscrew - Skt HD M8x25	2	0211132503
53	Lockwasher 12	8	0333223600
54	Capscrew-Hex M12x70	8	0147140903
55	Gasket Intercooler	2	1312100927
56	Cover Valve	3	1312100897
57	Safety Valve 75 psi	1	1312100899
58	Capscrew-Hex M8x90	4	0147133803
59	Copper Gasket B8	7	1312100924
60	Intercooler	1	1312100871
61	Aluminum Tube 10x380	1	1312100863
62	Filter Inlet Assembly	1	1312100881
63	Filter Replacement Element	1	FE001
64	Connecting Rod	2	1312100869
65	Dipper-Oil	2	1312100870
66	Insert Half	4	1312100905
67	Bearing- Wrist Pin Needle	2	1312100910
68	Snap Ring - Internal	4	1312100867
69	Wrist Pin LP Piston	1	1312100901
70	Wrist Pin HP Piston	1	1312100902
71	Piston-LP	1	1312100887
72	Piston-HP	1	1312100888
73	Piston Ring Set- LP	1	1312100885
74	Piston Ring Set- HP	1	1312100886
75	Copper Gasket - Valve Seat	5	1312100922
76	Valve Assembly-LP Inlet	2	1312100890
77	Bushing 3/4 x 1-1/4"	1	1312100334
	Gasket Set		1312100925
	Head Rebuild Kit		1312100780
	Overhaul Kit		1312100775



CA2 (1312202700) (Continued)

Item	Description	Qty	Part #
1	Crankcase	1	1312100877
2	Crank Shaft	1	1312100931
3	Fly Wheel	1	1312100883
4	Cylinder	1	1312100880
5	Head (Left)	1	1312100878
	Head (Right)	1	1312100879
6	Oil Sight Glass	1	1312100903
7	Oil Drain Pipe	1	1312100859
8	Oil Drain Pipe Cap	1	1312100861
9	Oil Fill Elbow	1	1312100933
10	Plug	4	1312100866
11	Spacer - Inlet Valve	2	1312100893
12	Spacer Discharge Valve	3	1312100894
13	Breather Body	1	1312100934
14	Copper Connector	1	1312100860
15	Copper Nut	2	1312100856
16	Cover-Centrifugal Unloader	1	1312100899
18	Retainer Inlet Valve	4	1312100898
19	Capscrew-Hex M8x25	28	0147132503
20	Lockwasher 8	8	0333222500
21	Retainer Inlet Valve	2	1312100895
22	Gasket Rear Cap	1	1312100920
23.1	Shim 0.20 Brg. Adj.	1	1312100930
23.2	Shim 0.10 Brg. Adj.	2	1312100929
24	Retainer Discharge Valve	4	1312100896
25	Copper Elbow	1	1312100857
26	Gasket Side Cover	2	1312100917
27	Cover Crankcase Side	2	1312100904
28	Copper Gasket	26	1312100921
29	Gasket Front Cap	1	1312100915
30	Bearing Cap Rear	1	1312100909
31	Bearing Cone Rear	1	1312100908
32	Bearing Cone Front	1	1312100906
33	Bearing Cap Front	1	1312100907
34	Seal-Shaft	1	1312100911
35	Cap Front	1	1312100868
36	Capscrew-Hex M16x120	1	0147149203
37	Key Fly Wheel C1	1	1312100928
38	Lockwasher 16	1	0333224300
39	Nut - Hex M16	1	0261111403
40	Gasket - Cylinder to Crankcase	1	1312100914
41	Capscrew-Hex M10x30	12	0147136303
42	Copper Gasket 10	12	1312100923

Item	Description	Qty	Part #
43	Aftercooler	1	1312100874
44	Gasket Valve Cover	6	1312100919
45	Valve Assy HP Inlet	2	1312100891
46	Safety Valve 250 psi	1	1312100862
47	Gasket Aftercooler	4	1312100918
48	Elbow Aftercooler	2	1312100872
49	Gasket - Cylinder Head	2	1312100913
50	Capscrew - Skt HD M8x30	4	0211132603
51	Capscrew - Skt HD M8x25	4	0211132503
52	Lockwasher 12	16	0333223600
53	Capscrew-Hex M12x70	16	0147140903
54	Gasket Intercooler	4	1312100927
55	Reducing Bushing	2	1312100864
56	Cover Valve	6	1312100897
57	Safety Valve 75 psi	2	1312100889
58	Capscrew-Hex M8x90	8	0147140903
59	Copper Gasket B8	14	1312100924
60	Intercooler	2	1312100871
61	Aluminum Tube 10x380	1	1312100863
62	Filter Inlet Assembly	2	1312100881
63	Filter Replacement Element	2	FE001
64	Connecting Rod	4	1312100869
65	Dipper-Oil	4	1312100870
66	Insert Half	8	1312100905
67	Bearing- Wrist Pin Needle	4	1312100910
68	Snap Ring - Internal	8	1312100867
69	Wrist Pin LP Piston	2	1312100901
70	Wrist Pin HP Piston	2	1312100902
71	Piston-LP	2	1312100887
72	Piston-HP	2	1312100888
73	Piston Ring Set- LP	2	1312100885
74	Piston Ring Set- HP	2	1312100886
75	Copper Gasket - Valve Seat	10	1312100922
76	Valve Assembly-LP Inlet	4	1312100890
77	Valve Assembly HP/LP	4	1312100334
	Gasket Set	1	1312100926
	Head Rebuild Kit		1312100781
	Overhaul Kit		1312100776

WARRANTY STATEMENT

The Company warrants that the Equipment manufactured by it and delivered hereunder shall be free from defects in material and workmanship for a period of twelve (12) months from the date of initial start-up, or eighteen (18) months from the date of shipment from the manufacturer, whichever occurs first. The foregoing warranty period shall apply to all Equipment, except for the following: (A) All two stage reciprocating stationary models are warranted for the earlier of twenty-four (24) months from the date of initial operation or thirty (30) months from date of shipment from the manufacturer. (B) Replacement parts will be warranted for three (3) months from the date of shipment from the manufacturer. Should the failure to conform to this warranty be reported in writing to the Company within said period, the Company shall, at its option, correct such non-conformity by suitable repair to such Equipment, or furnish a replacement part F.O.B point of shipment, provided that the Purchaser has installed, maintained, and operated such Equipment in accordance with good industry practices, and has complied with specific recommendations of the Company. Accessories and equipment furnished by the Company, but manufactured by others, shall carry whatever warranty the manufacturer conveyed to the Company and which can be passed on to the Purchaser. The Company shall not be liable for any repairs, replacements, or adjustments to the Equipment, or any costs of labor performed by the Purchaser without the Company's prior written approval.

The Company makes no performance warranty unless specifically stated within its proposal, and the effects of corrosion, erosion, and normal wear and tear are specifically excluded from the Company's warranty. In the event performance warranties are expressly included, the Company's obligation shall be to correct in the manner and for the period of time provided above.

THE COMPANY MAKES NO OTHER WARRANTY OR REPRESENTATION OF ANY KIND WHATSOEVER, EXPRESSED OR IMPLIED, EXCEPT THAT OF TITLE, AND ALL IMPLIED WARRANTIES OF MERCHANTABILITY AND FITNESS FOR A PARTICULAR PURPOSE, ARE HEREBY DISCLAIMED. THIS WARRANTY SUPERSEDES ALL PREVIOUS WARRANTY STATEMENTS.

Correction by the Company of non-conformities, whether patent or latent, in the manner and for the period of time provided above, shall constitute fulfillment of all liabilities of the Company and its distributors for such non-conformities with respect to, or arising out of such Equipment.

LIMITATION OF LIABILITY

THE REMEDIES OF THE PURCHASER SET FORTH HEREIN ARE EXCLUSIVE, AND THE TOTAL LIABILITY OF THE COMPANY, ITS DISTRIBUTORS AND SUPPLIERS WITH RESPECT TO CONTRACT OR THE EQUIPMENT AND SERVICES FURNISHED IN CONNECTION WITH THE PERFORMANCE OR BREACH THEREOF, OR FROM THE MANUFACTURE, SALE, DELIVERY, INSTALLATION, REPAIR OR TECHNICAL DIRECTION COVERED OR FURNISHED UNDER CONTRACT, WHETHER BASED ON CONTRACT, WARRANTY, NEGLIGENCE, INDEMNITY, STRICT LIABILITY OR OTHERWISE, SHALL NOT EXCEED THE PURCHASE PRICE OF THE EQUIPMENT UPON WHICH SUCH LIABILITY IS BASED.

THE COMPANY, ITS DISTRIBUTORS AND ITS SUPPLIERS SHALL IN NO EVENT BE LIABLE TO THE PURCHASER, ANY SUCCESSORS IN INTEREST, OR ANY BENEFICIARY OR ASSIGNEE OF THE CONTRACT FOR ANY CONSEQUENTIAL, INCIDENTAL, INDIRECT, SPECIAL OR PUNITIVE DAMAGES ARISING OUT OF THIS CONTRACT OR ANY BREACH THEREOF, OR ANY DEFECT IN, OR FAILURE OF, OR MALFUNCTION OF THE EQUIPMENT, WHETHER OR NOT BASED ON LOSS OF USE, LOST PROFITS OR REVENUE, INTEREST, LOST GOODWILL, WORK STOPPAGE, IMPAIRMENT OF OTHER GOODS, LOSS BY REASON OF SHUTDOWN OR NON-OPERATION, COST OF PURCHASE OF REPLACEMENT POWER, OR CLAIMS OF PURCHASER OR CUSTOMERS OF PURCHASER FOR SERVICE INTERRUPTION, WHETHER OR NOT SUCH LOSS OR DAMAGE IS BASED ON CONTRACT, WARRANTY, NEGLIGENCE, INDEMNITY, STRICT LIABILITY OR OTHERWISE.

ABAC Air Compressors
701 N. Dobson Avenue
Bay Minette, AL 36507
866-869-3114 (Parts and Technical)