



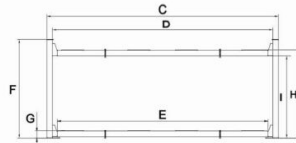
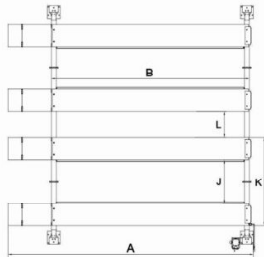
Foldable drive-on ramps. (each lift 4 units).

## MODEL 409-DP 409-DPX

The new creations are real space masters. They max your garage and create four comfortable parking spaces. Low profile design, so easy to drive on. 409-DPX is a longer and higher model than 409-DP.

### FEATURES

- Lifting capacity: 9,000lbs, max. car weight: 6,000lbs.
- Low profile design, minimum platform height only 6 1/8".
- Both primary safety lock and cable-slack protection device are come as standard.
- **AMGO's patented design** concealed safety lock control device, with manual single-point lock release.
- Exclusive: Foldable drive-on ramps come as standard of 4 units.
- Exclusive: Ingenious designs to minimize the package size, reduces the transportation charge and storage cost.
- Exclusive: Double-S Shaped columns for increased strength.
- Non-slip diamond platforms.
- Adjustable multiple safety ladders.
- AMGO 5-3-2 Warranty.



### SPECIFICATIONS

Model	Lifting Capacity	Lifting Time	A	B	C	D	E	F	G	H	I	J	K	L	Gross Weight	Motor Power		
			Overall Length (Inc.Ramps)	Outside edge of crossbeams	Overall Width	Width Between Columns	Drive Through Width	Overall Height	Minimum Height	Lifting Height	Max. lock height to top of runway	Max. height underneath runway	Max. lock height underneath runway	Width Between Runways	Overall width of single parking unit	Width Between two parking units		
409-DP	9,000lbs	47S	207 9/32"	170 9/16"	201 9/16"	192 1/16"	177 23/32"	82 7/8"	6 3/32"	73 11/16"	70 15/16"	69 3/4"	67"	37"	74 13/32"	21 21/32"	2,810lbs (1275kg)	2.0HP 220V Single phase
409-DPX	9,000lbs	57S	234 27/32"	198 1/8"	201 9/16"	192 1/16"	177 23/32"	96 21/32"	6 3/32"	87 11/16"	84 15/16"	83 3/4"	81"	37"	74 13/32"	21 21/32"	3,142lbs (1425kg)	2.0HP 220V Single phase

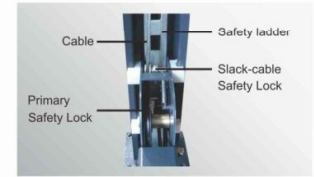
## EXCLUSIVE FEATURES



**AMGO's patented design** concealed safety lock control device, with manual single-point lock release.



Special structure design to allow back-to-back installation.



Double safety locks provide additional safety.

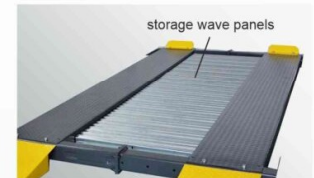


90° degree motor installing plate.

## OPTIONAL PARTS



Optional plastic oil tray (Kits No.: 40806 ), 1set 4pcs.



Optional storage wave panels (Kits No. 40812)



Optional Motor protect cover for outdoor installation (Kits No.: 40810) with emergency stop switch.



Optional Slider jack with handle pump incl. 1.5" and 2.5" extension adapters.

## AMGO HYDRAULIC CORPORATION

SC Division: 1931 Joe Rogers Jr Blvd, Manning, SC 29102, USA  
Tel:(803)505-6410

TX Division: 4310 Adler, Suite 200, Dallas, TX 75211, USA  
Tel:(214)377-7742