

# PTC500 ASSEMBLY

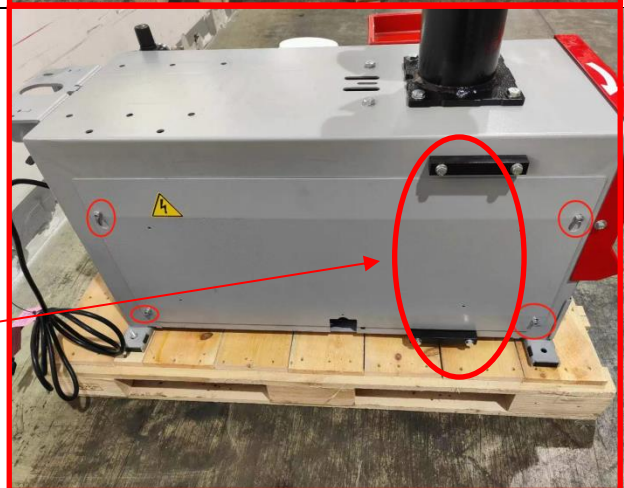
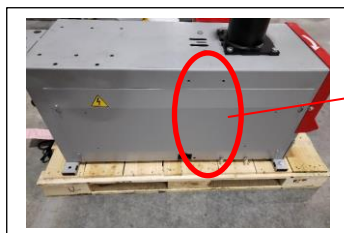
1. REMOVE THE BOX (Change the picture. The new version has no lifts pedals)



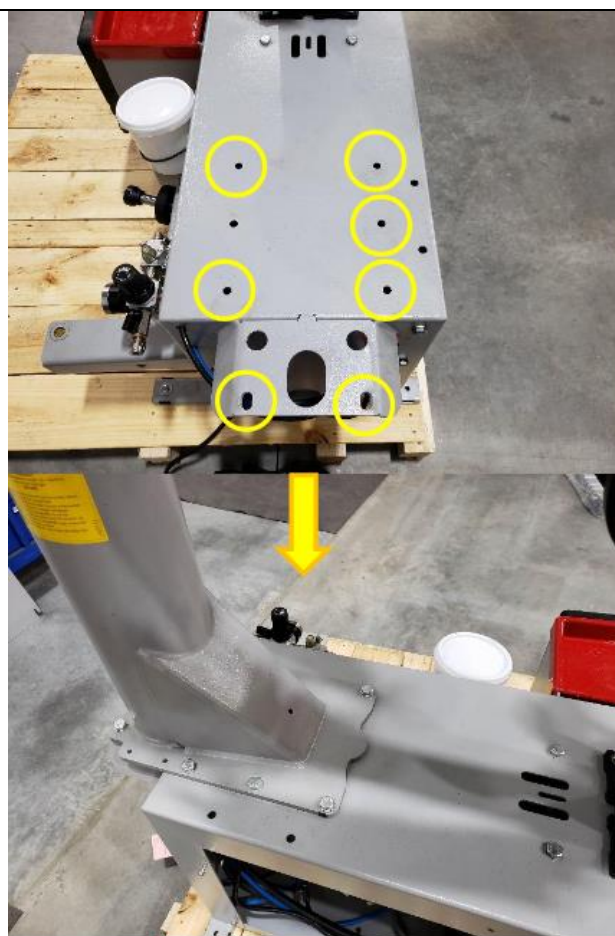
2. CAREFULLY REMOVE ALL THE PARTS FROM THE PALLET (changed the picture with the latest version without the lift next to bead breaking pedal)



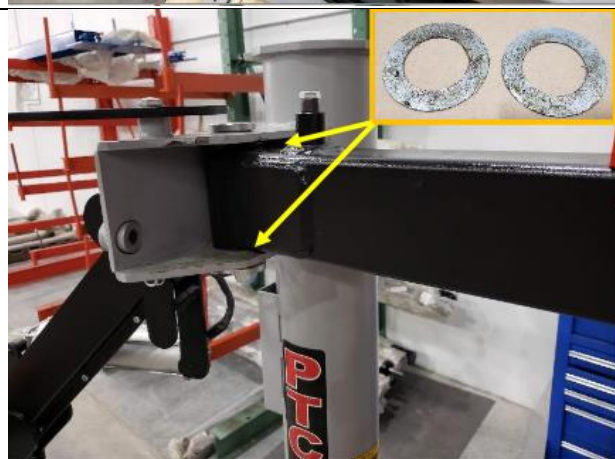
3. OPEN THE SIDE PANEL (changed the picture with the new version which have the lift support already assembled on the left side)



4. LACE THE TOWER ON TOP OF THE CABINET AND SECURE IT USING THE 7 BOLTS+NUTS (PROVIDED INSIDE THE ACCESSORY BOX)



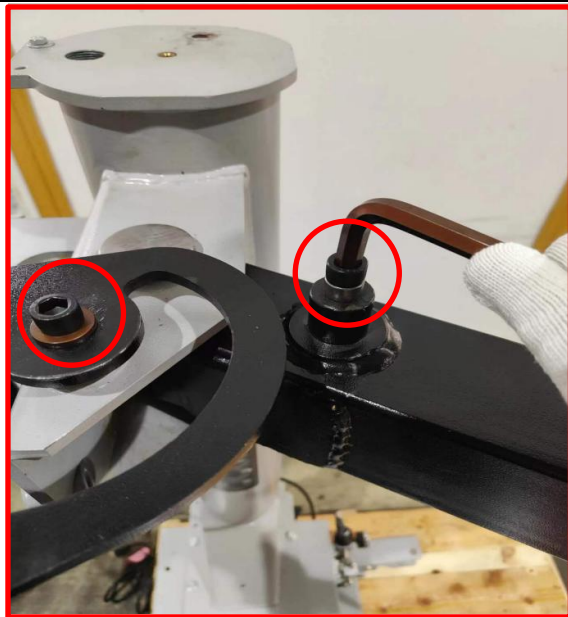
5. SET THE SWING ARM IN POSITION AND PLACE THE 2 SHIMS, BETWEEN THE ARM AND THE TOWER



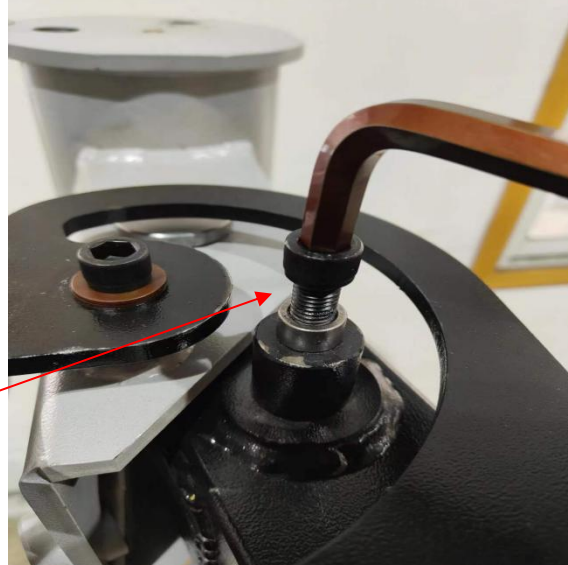
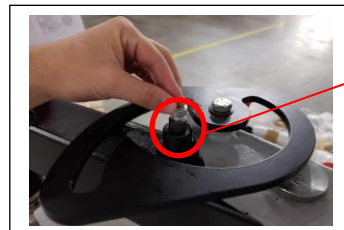
6. LOCK THE ARM IN POSITION USING THE PROVIDED HARDWARE



7 . REMOVE THE SCREW ON TOP OF THE ARM (OR THE ONE ON TOP OF THE LOCKING BRACKET) (*The most updated version use different screws, )*



8 . PLACE THE ARM BETWEEN THE LOCKING BRACKET AND REMOUNT THE SCREW (*new version use a different screw*)



9. SCREW THE KNOB IN PLACE



10. PLACE THE BEAD BREAKER SHOVEL IN POSITION

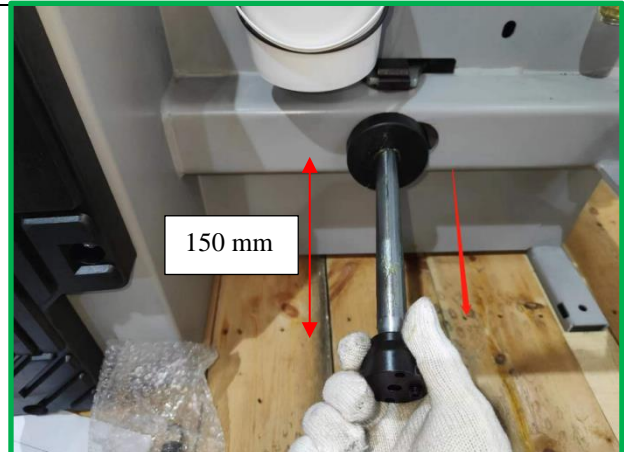


11. SECURE THE SHOVEL USING THE PROVIDED BOLT

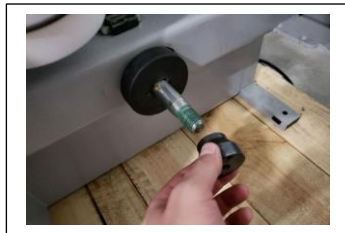


# PTC500 ASSEMBLY

12. Manually pull the cylinder rod (about 150mm from the body, it will become useful later on)



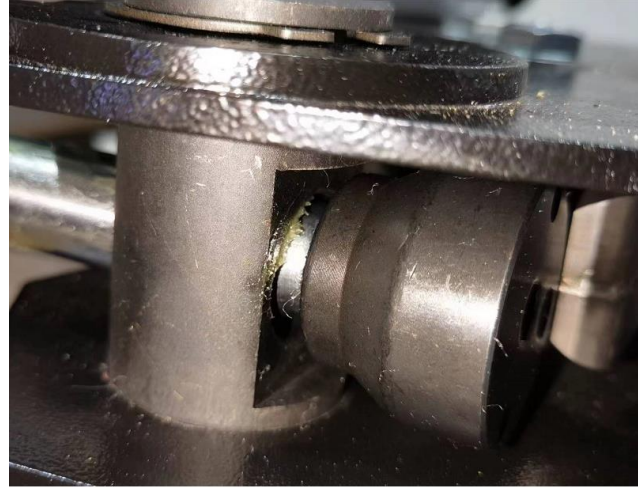
13. Remove the nut (changed the picture with the one having the rod pulled out at the most convenient distance)



CENTER THE BEAD BREAKER ARM WITH THE CYLINDER



14. LOCK THE CYLINDER IN PLACE (*need to pay attention to the direction of the pin were the cylinder rod is inserted, flat part of this pin outside needs to face the nut screwed on the cylinder*)



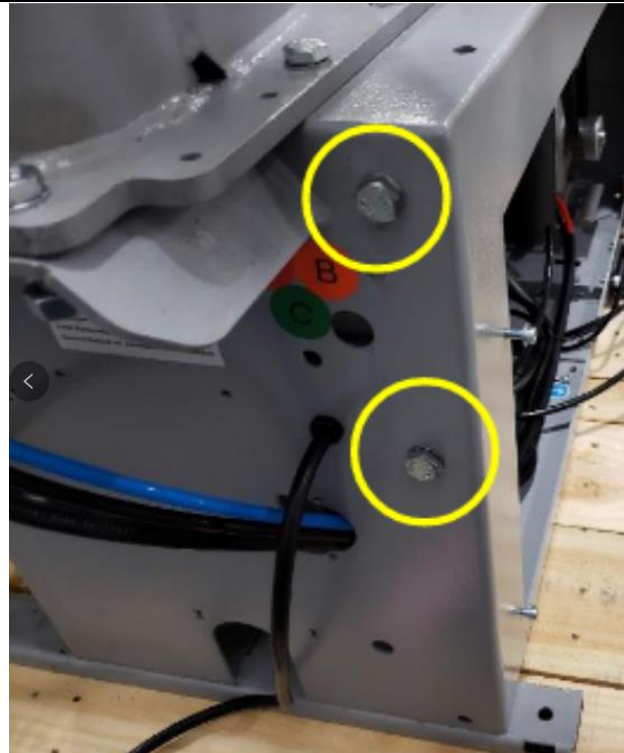
15. Use the Allen wrench to tight the screw on the cylinder rod



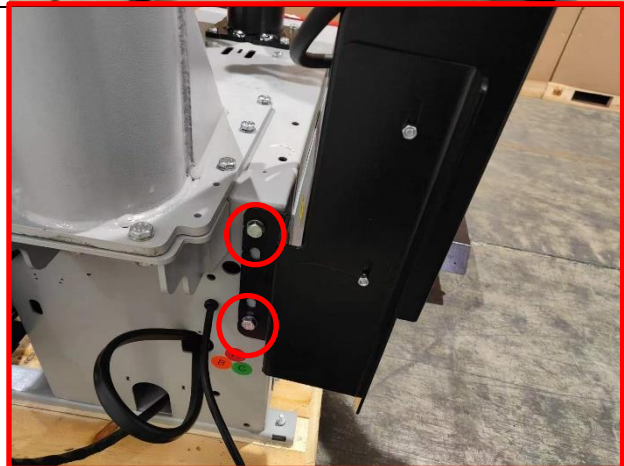
16. CONNECT THE SPRING TO THE CABINET AND TO THE BEAD BREAKER ARM



17. REMOVE THE 2 BOLTS IN THE BACK OF THE MACHINE



18. Fix the TOO TRAY to the body with the 2 bolts previously removed (*the support of the gun has changed*)



19. CONNECT THE BLACK HOSE TO THE BOTTOM FITTING (BEHIND THE ACCESSORY RACK)



# PTC500 ASSEMBLY

20. CONNECT THE RED HOSE TO THE TOP FITTING (BEHIND THE ACCESSORY RACK)



21. Manually separate the fitting from the valve so it can be installed more easily on the vertical post. ADD TEFLON TO THE FITTING OF THE VALVE (BEAD SEATER)



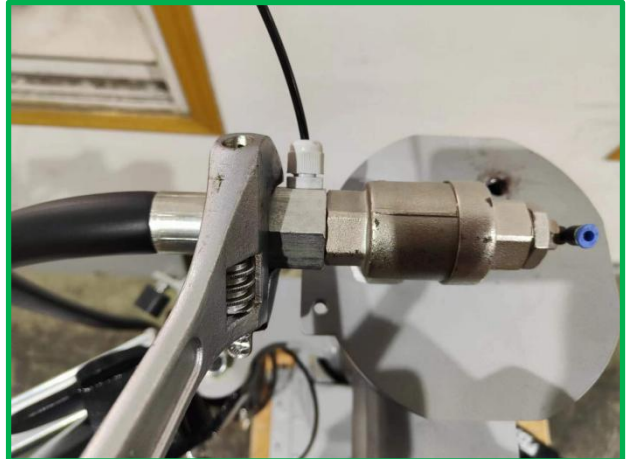
22. INSERT THE BEAD SEATER VALVE ON THE VERTICAL ARM



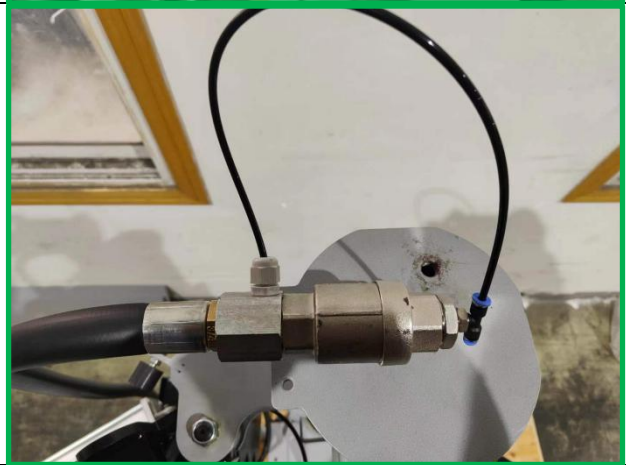


# PTC500 ASSEMBLY

23. Secure the hose to the valve



24. Connect the black hose



25. Prepare white air hose to add Teflon to fittings



# PTC500 ASSEMBLY

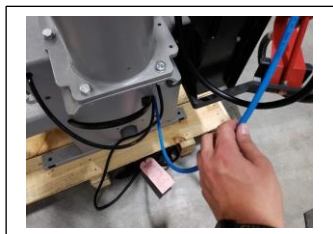
26. CONNECT THE AIR HOSE TO THE TOWER



27. CONNECT THE WHITE HOSE TO THE BEAD SEATER



28. Take out the black hose from the tire changer body and the insert it up to the small iron pipe welded on the vertical arm. *(in the new version there is not blue hose)*

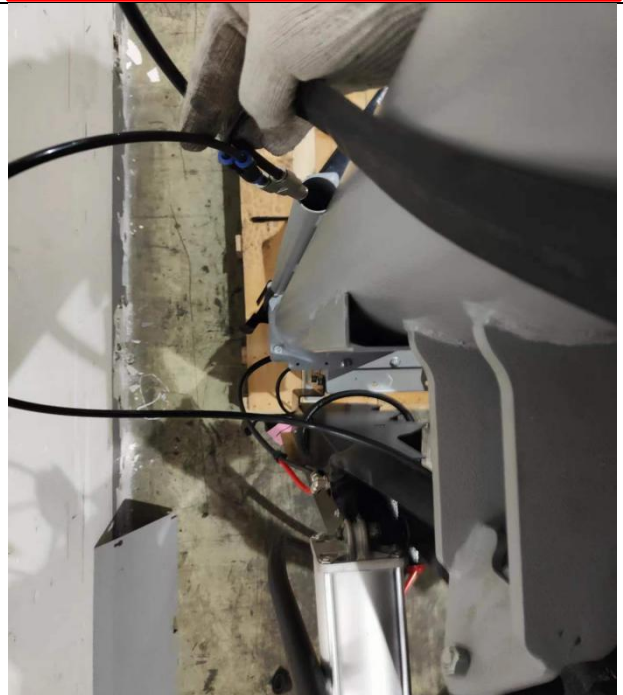


# PTC500 ASSEMBLY

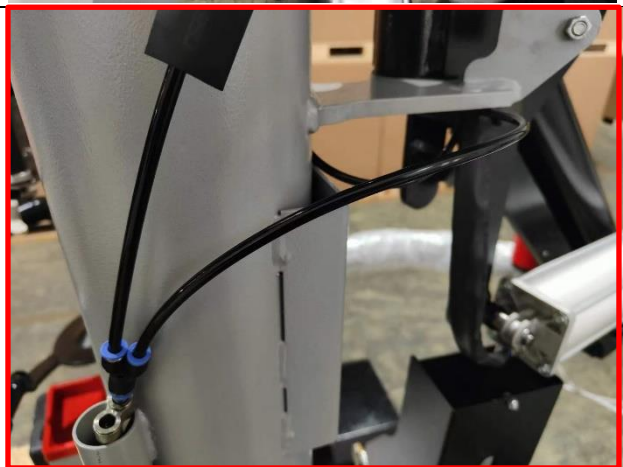
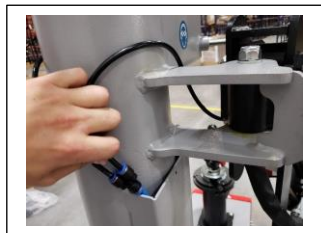
29. CONNECT THE PROVIDED T FITTING TO THE BLACK HOSE



CONNECT THE BLACK AIR HOSE FROM THE ASSIST ARM TO THE T FITTING



31. ONNECT THE BLACK AIR HOSE FROM THE ASSIST ARM TO THE T FITTING



# PTC500 ASSEMBLY

32. BOLT THE BRACKET WITH THE COIL HOSE TO THE TOP OF THE TOWER (And connect the spring tube. *You're going to receive this set already assembled so had to change the order of some steps and eliminate fews*)



PULL THE BLACK AIR HOSE OUT FROM THE BACK OF THE MACHINE AND CONNECT IT TO THE FITTING ON TOP OF THE TOWER (*in the new packing you need to connect the hose on the lower side*)



## RIGHT SIDE ASSIST ARM

33. REMOVE THE LUBRICANT ASSEMBLY  
(*Note that the two hoses must be marked , Follow-up installation must be connected to the correct connector*)



34. Set the screws of the accessories like showed on the picture to make easier its installation



35. LACE THE L BRACKET ON THE BACK OF THE MACHINE USING THE LOCKING PLATE FROM THE INSIDE



36. PLACE THE SINGLE LOCKING PLATE INSIDE THE L BRACKET



37. PRESET THE LAST LOCKING PLATE FROM THE INSIDE ON THE RIGHT SIDE OF THE MACHINE



SCREW THE LONG FOOT/KNOB INTO THE BOTTOM PART OF THE ASSIST ARM TOWER



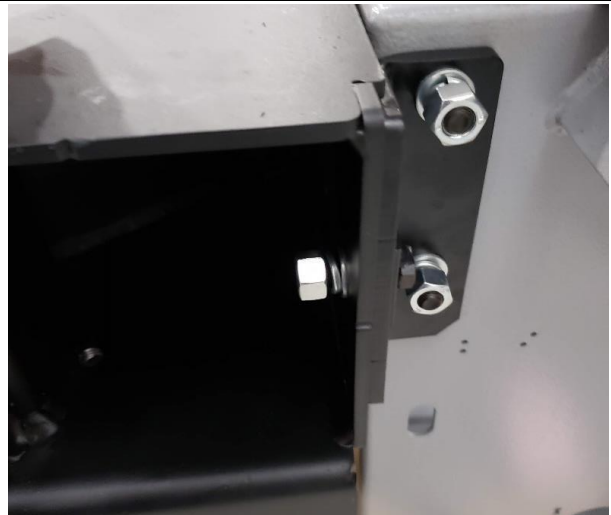
40. Fix the screw, (do not need to be fixed firmly)



SECURE THE TOWER WITH NUT AND WASHERS TO  
THE BACK PLATE



LEAVE THE NUT LOOSE



41.PLACE THE SMALL SHIM BETWEEN THE ARM AND THE CABINET



42.PLACE THE SMALL SHIM BETWEEN THE ARM AND THE CABINET

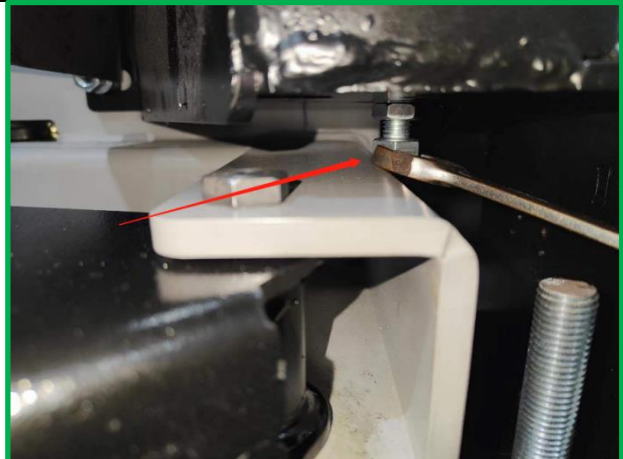


43.PLACE THE TIRE BAR HOLDER BETWEEN THE ASSIST ARM AND THE NUTS/WASHERS LOCK ALL THE NUTS AND SECURE THE ASSIST ARM

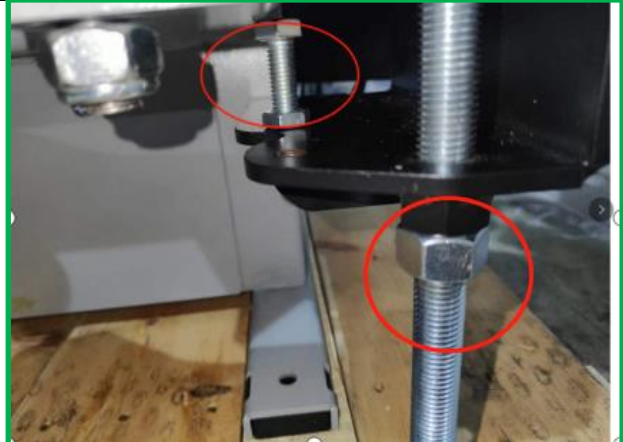




44.Lock the support screws



45.Lock the support screws



46.The disc arm and the black roller auxiliary arm are respectively placed at the bottom and top of the tower (inserted a new picture without the old wheel lift and put the 2 steps regarding the installation of the arm on the same picture )

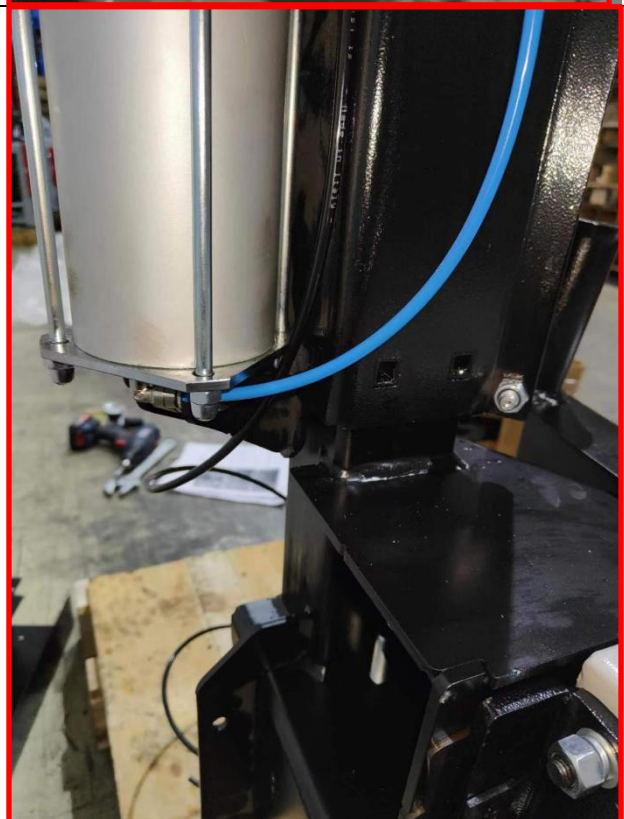


# PTC500 ASSEMBLY

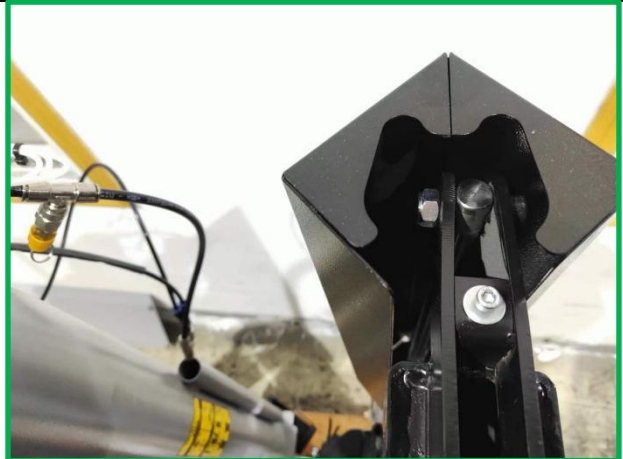
47. CONNECT THE WHITE AIR HOSE FROM THE ARM TO THE TOP FITTING OF THE ARM TOWER S CYLINDER



48. CONNECT THE BLUE AIR HOSE FROM THE ARM TO THE BOTTOM FITTING OF THE ARM TOWER S CYLINDER



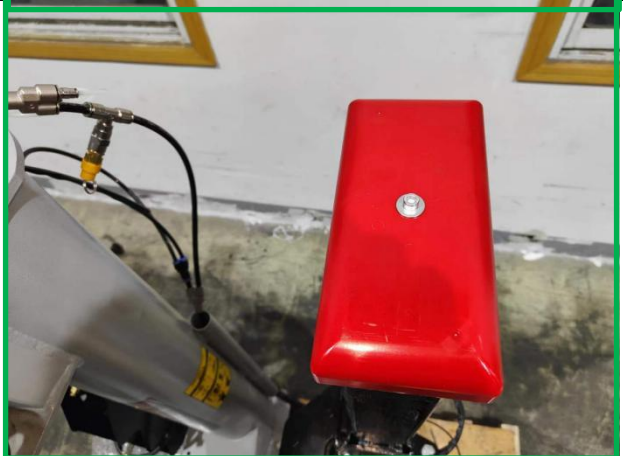
49. The cylinder protective cover is placed from the top of the tower



50. Place the protective cover in place and secure the screws



51. Red plastic protective cover, installed to the top of the tower



# PTC500 ASSEMBLY

52. Pass the oil-water filter hose through the side of the box



53. RECONNECT THE HOSES TO THE ASSEMBLY (The installation position of the hose cannot be changed)

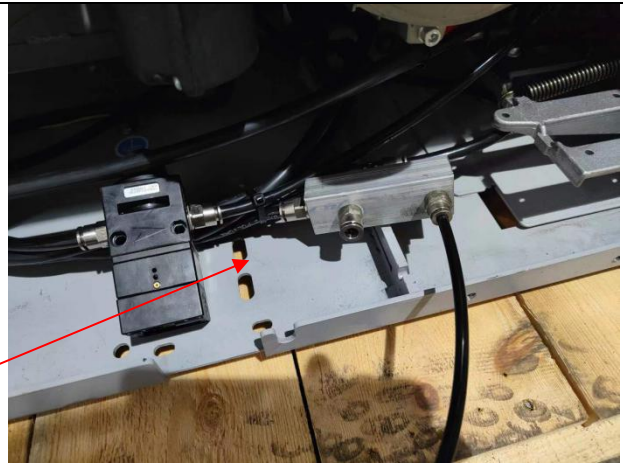


54. Insert the auxiliary arm main hose into the enclosure from the side of the enclosure



55. connect the hose to the valve inside the cabinet

*we split this steps in 2*



56. Install the lift pedal pipe on the valve



57. Fix the machine side cover to the machine



58. Install the elevator support plate



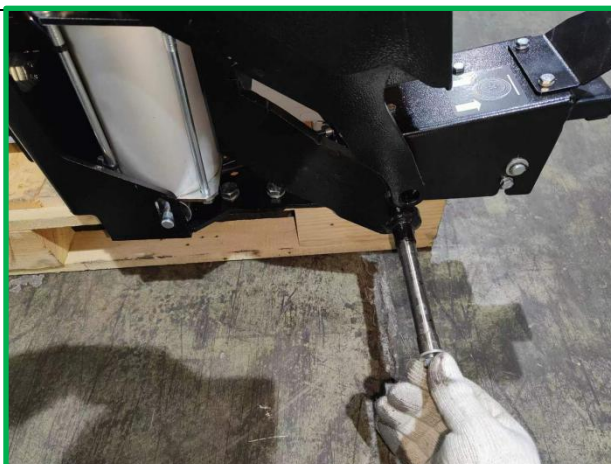
59. Install the elevator and secure the two screws



60. Secure the two nuts



61.Remove this screw



62.Remove this screw



63.Secure pedals and install screws(Be careful to turn the pedal over and fix it according to the picture)



64. Secure pedals and install screws (Be careful to turn the pedal over and fix it according to the picture The pedal needs to be raised and aligned with the mounting hole)

