

Rammstein Air Interlock and Damper Wiring Diagrams

10-11-2015

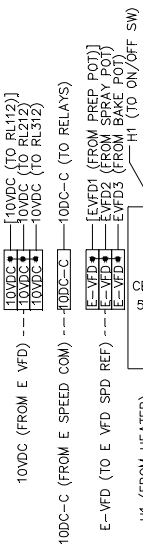
Table of Contents

1	Terminal blocks: Control panel – Spray/Bake	3
2	Terminal blocks: Gastrain panel - Spray/Bake	4
3	Interlock: Doors	5
4	Interlock: Compressed air power – no inside access lights	6
5	Interlock: Compressed air power - with inside access lights	7
6	Interlock: Fire Suppression – Heat off only.....	8
7	Interlock: Fire suppression – Heat off/Fans off.....	9
8	Interlock: Air Flow Switch (Mode #2)	10
9	Interlock: Spray booth high temp limit switch.....	11
10	Damper: Intake – 2 position (ID)	12
11	Damper: Intake - 3 position (ID)	13
12	Damper: Recirc (RD).....	14

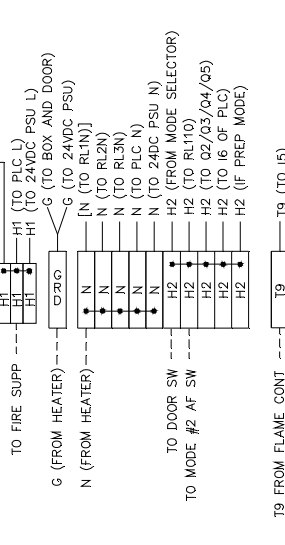
1 Terminal blocks: Control panel – Spray/Bake

CONTROL PANEL – ANALOG

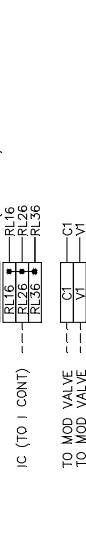
10VDC



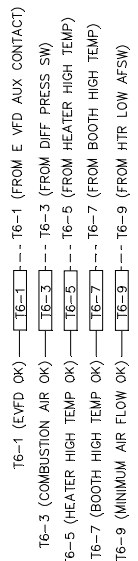
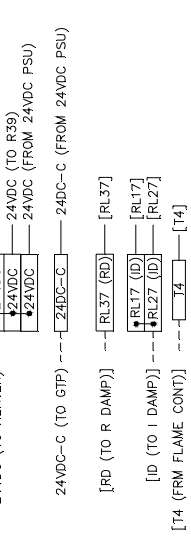
110VAC



10VDC



24VDC



IF ANY OF THE ORIGINAL WIRE AS SUPPLIED WITH THE HEATER MUST BE REPLACED, IT MUST BE REPLACED WITH TYPE THHN [194F (90C)] WIRE OR ITS EQUIVALENT.

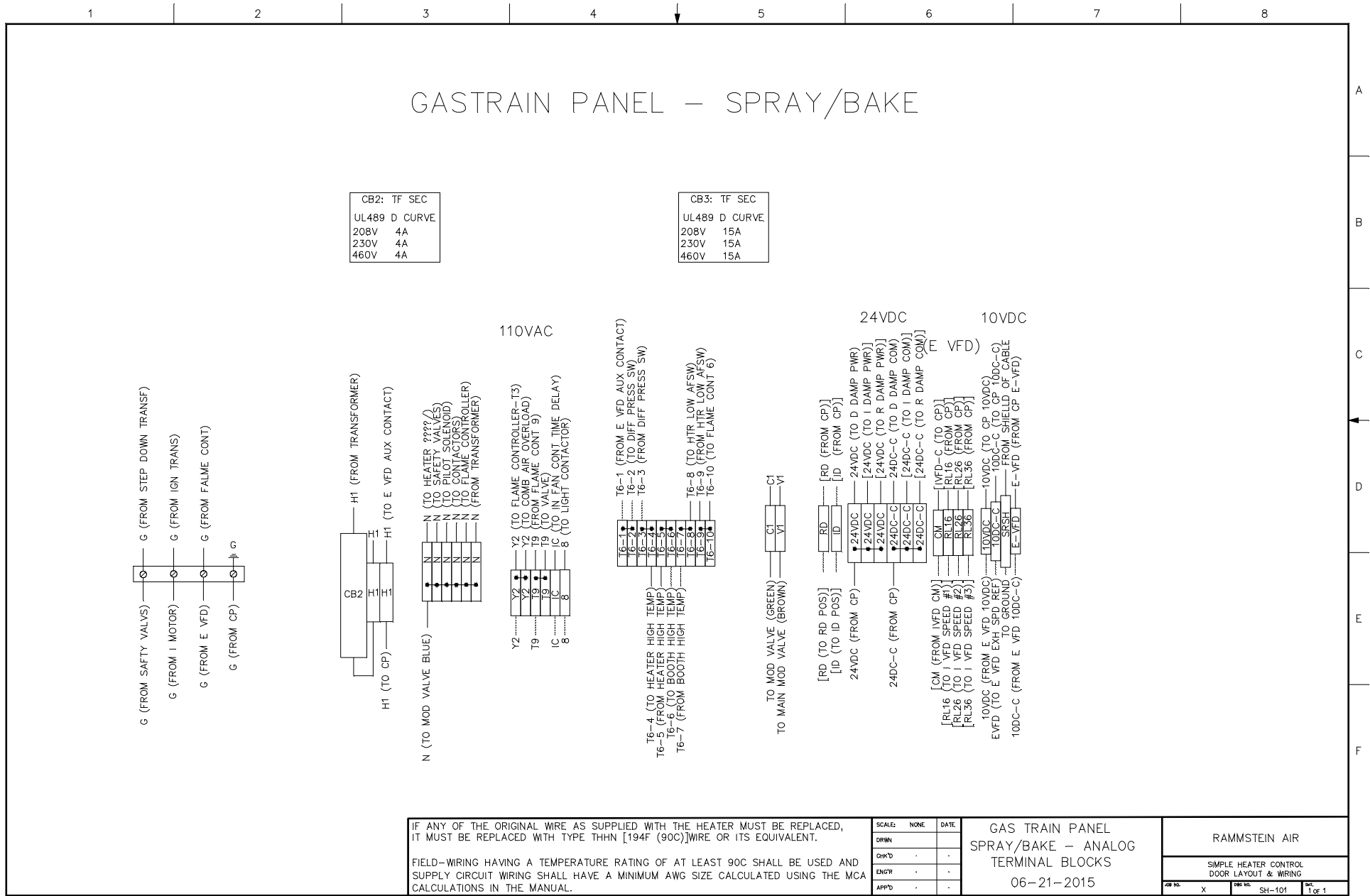
FIELD-WIRING HAVING A TEMPERATURE RATING OF AT LEAST 90C SHALL BE USED AND SUPPLY CIRCUIT WIRING SHALL HAVE A MINIMUM AWG SIZE CALCULATED USING THE MCA CALCULATIONS IN THE MANUAL.

SCALE:	NONE	DATE:
DRWN:		
CHK'D:	-	-
ENCR:	-	-
APP'D:	-	-

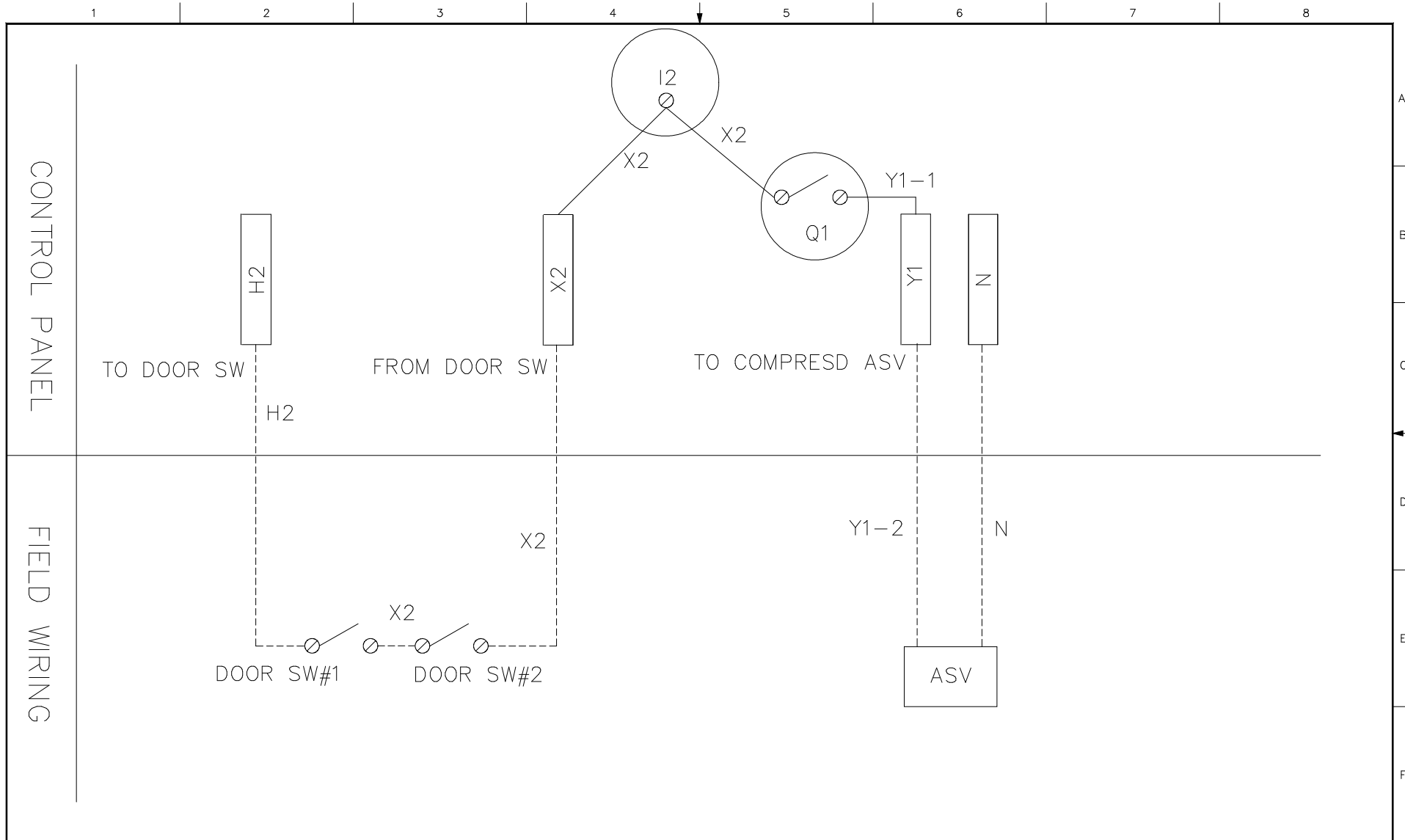
CONTROL PANEL – ANALOG
 TERMINAL BLOCKS
 06-21-2015

RAMMSTEIN AIR		
ENERGY EFFICIENT PANEL WIRING		
DRW NO.	DRW NO.	REV.
2090100	EE-102	1 of 1

2 Terminal blocks: Gastrain panel - Spray/Bake



3 Interlock: Doors



IF ANY OF THE ORIGINAL WIRE AS SUPPLIED WITH THE HEATER MUST BE REPLACED, IT MUST BE REPLACED WITH TYPE THHN [194F (90C)] WIRE OR ITS EQUIVALENT.

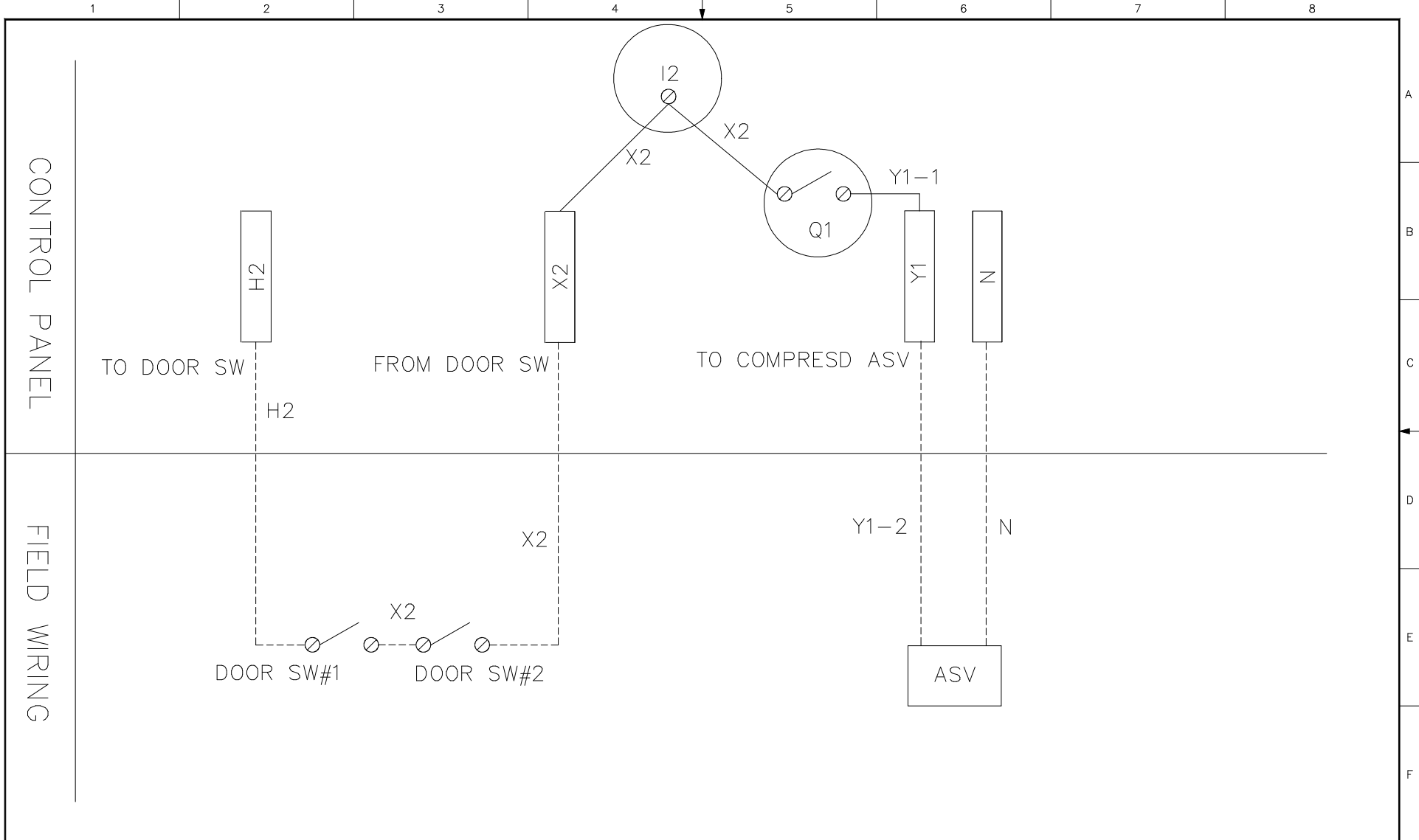
FIELD-WIRING HAVING A TEMPERATURE RATING OF AT LEAST 90C SHALL BE USED AND SUPPLY CIRCUIT WIRING SHALL HAVE A MINIMUM AWG SIZE CALCULATED USING THE MCA CALCULATIONS IN THE MANUAL.

SCALE:	NONE	DATE	
DRWN			
CHKD	.	.	.
ENGR	.	.	.
APPD	.	.	.

AIR SOLENOID VALVE
WIRING DIAGRAM
04-16-2013

RAMMSTEIN AIR		
JOB NO.	DWG NO.	SHEET
2090100	EE-102	1 of 1

4 Interlock: Compressed air power - no inside access lights



IF ANY OF THE ORIGINAL WIRE AS SUPPLIED WITH THE HEATER MUST BE REPLACED, IT MUST BE REPLACED WITH TYPE THHN [194F (90C)] WIRE OR ITS EQUIVALENT.

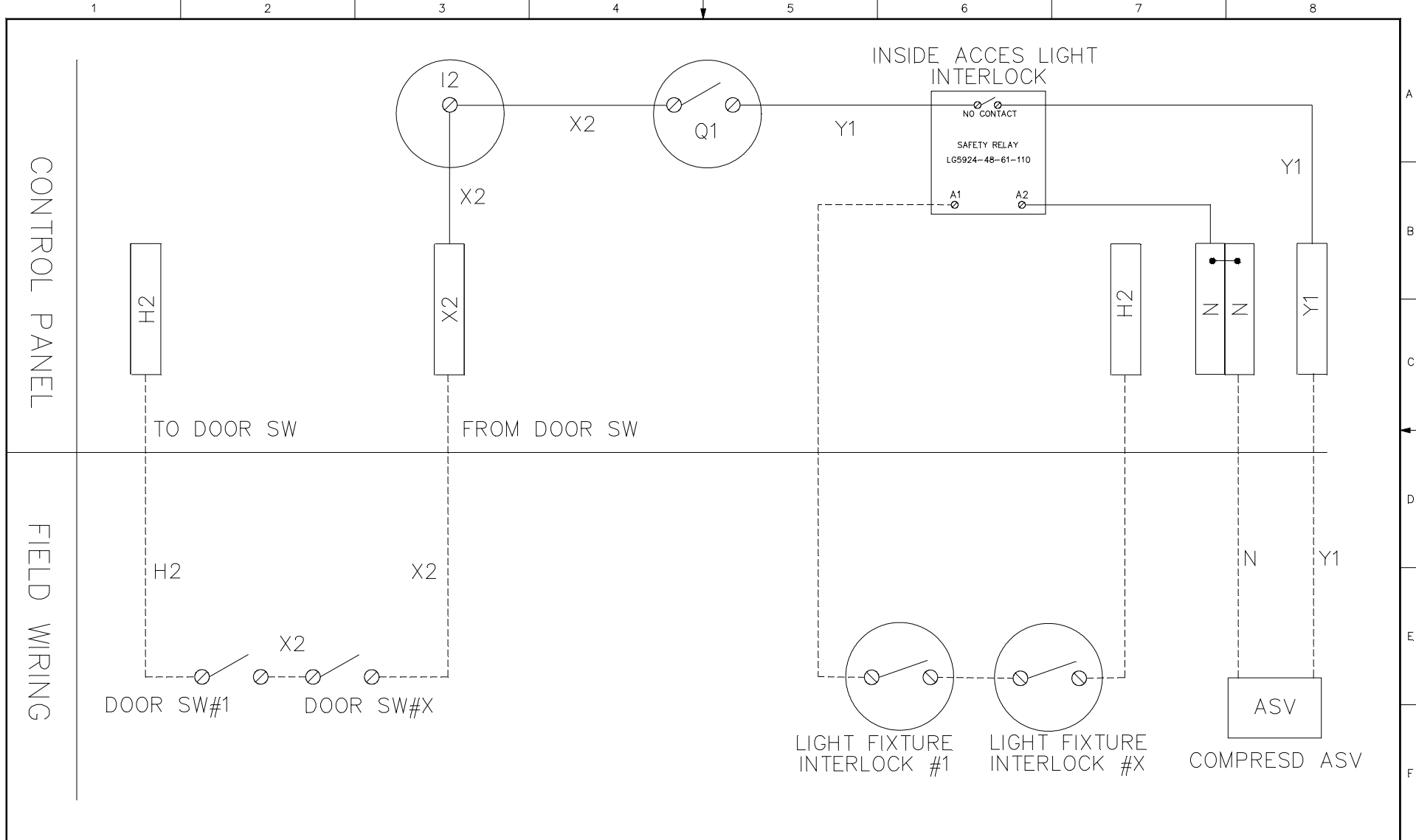
FIELD-WIRING HAVING A TEMPERATURE RATING OF AT LEAST 90C SHALL BE USED AND SUPPLY CIRCUIT WIRING SHALL HAVE A MINIMUM AWG SIZE CALCULATED USING THE MCA CALCULATIONS IN THE MANUAL.

SCALE:	NONE	DATE	
DRWN			
CHK'D	.	.	.
ENGR	.	.	.
APP'D	.	.	.

AIR SOLENOID VALVE
WIRING DIAGRAM
04-16-2013

RAMMSTEIN AIR		
JOB NO.	DWG NO.	SHEET
2090100	EE-102	1 of 1

5 Interlock: Compressed air power - with inside access lights



IF ANY OF THE ORIGINAL WIRE AS SUPPLIED WITH THE HEATER MUST BE REPLACED, IT MUST BE REPLACED WITH TYPE THHN [194F (90C)] WIRE OR ITS EQUIVALENT.

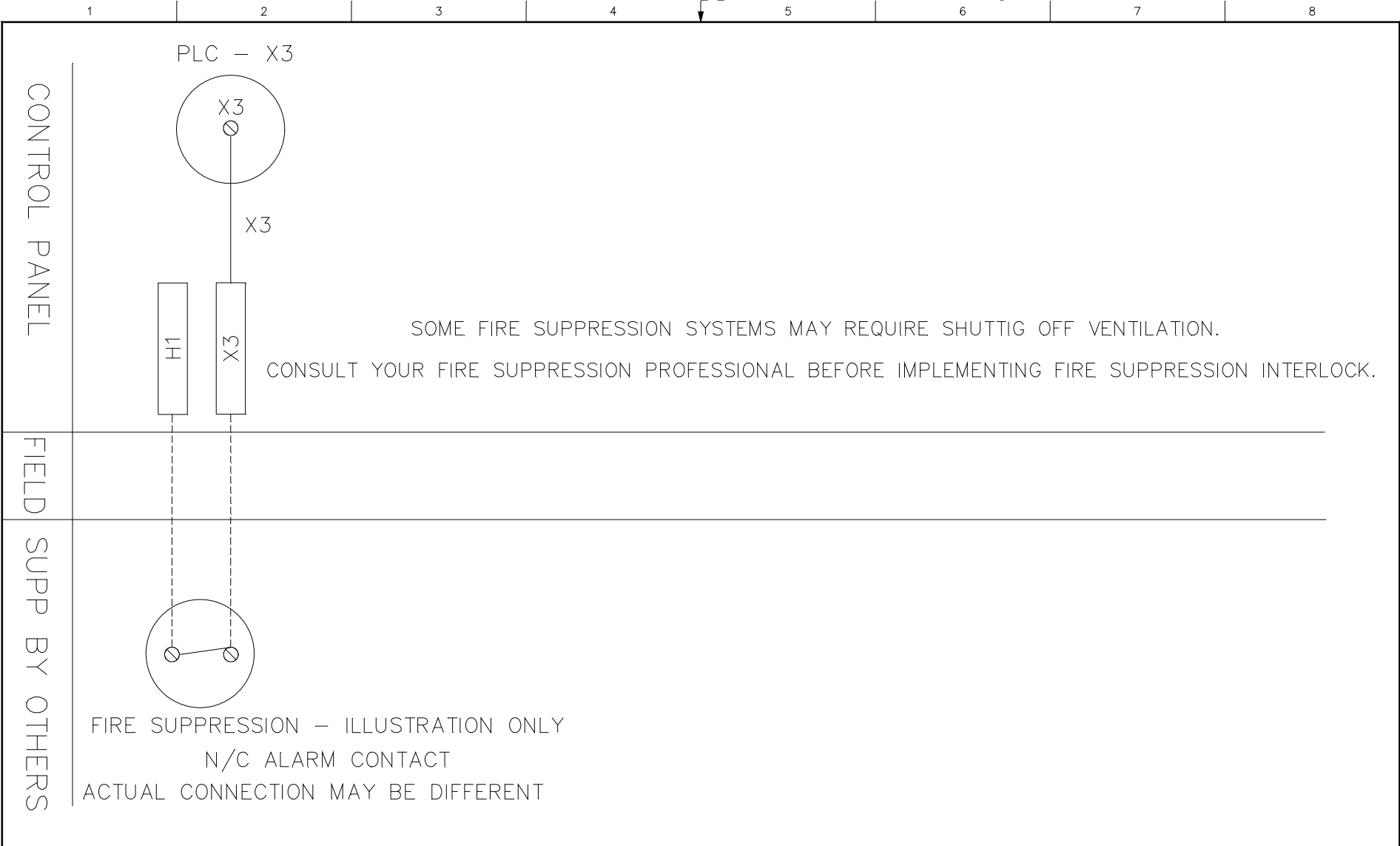
FIELD-WIRING HAVING A TEMPERATURE RATING OF AT LEAST 90C SHALL BE USED AND SUPPLY CIRCUIT WIRING SHALL HAVE A MINIMUM AWG SIZE CALCULATED USING THE MCA CALCULATIONS IN THE MANUAL.

SCALE:	NONE	DATE:	
DRWN:			
CHK'D:			
ENGR:			
APP'D:			

AIR SOLENOID VALVE
WIRING DIAGRAM
08-24-2015

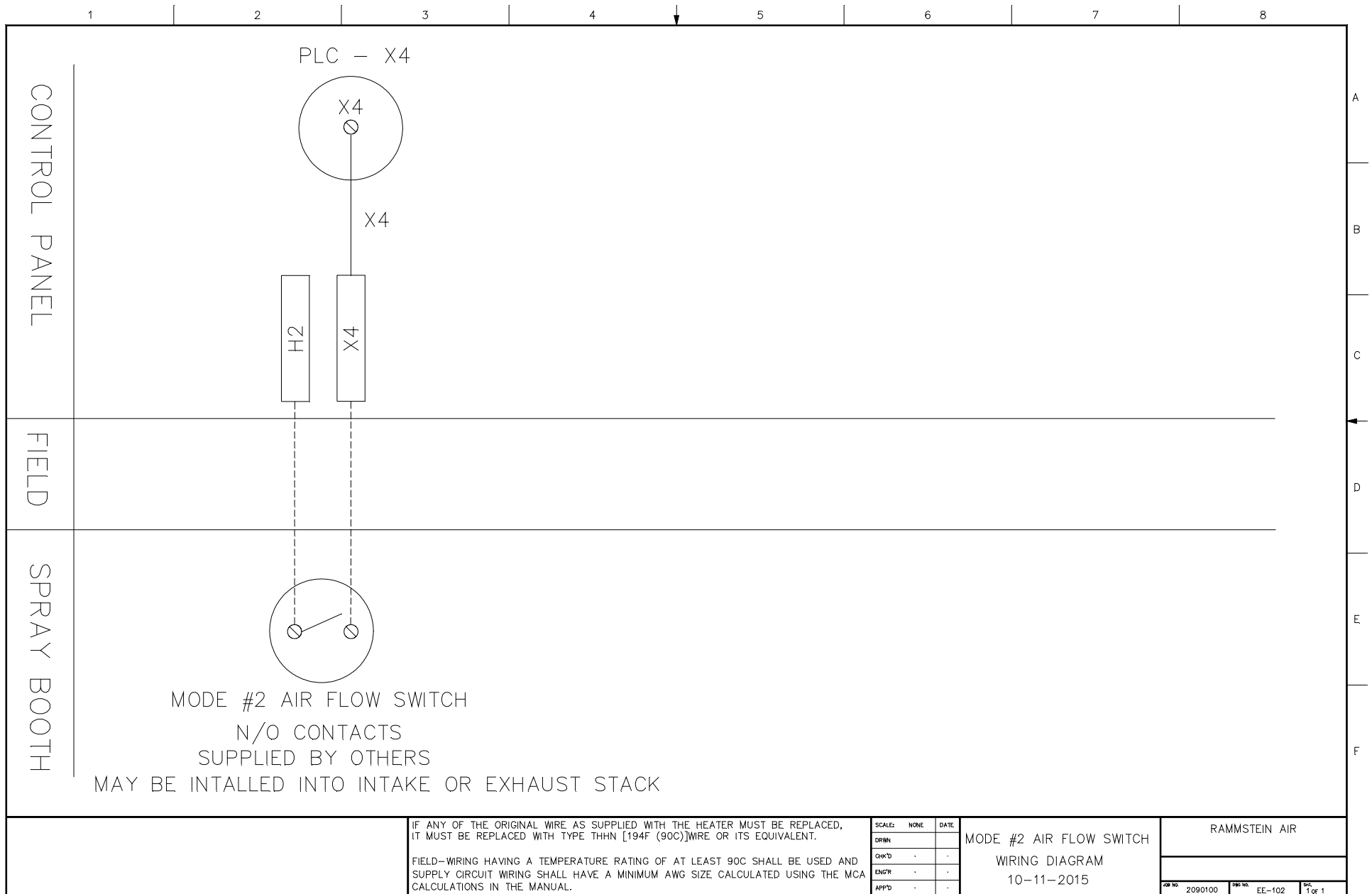
RAMMSTEIN AIR		
JOB NO.	2090100	REV. NO.
		EE-102
		SHEET
		1 OF 1

6 Interlock: Fire Suppression - Heat off only



<p>IF ANY OF THE ORIGINAL WIRE AS SUPPLIED WITH THE HEATER MUST BE REPLACED, IT MUST BE REPLACED WITH TYPE THHN [194F (90C)] WIRE OR ITS EQUIVALENT.</p> <p>FIELD-WIRING HAVING A TEMPERATURE RATING OF AT LEAST 90C SHALL BE USED AND SUPPLY CIRCUIT WIRING SHALL HAVE A MINIMUM AWG SIZE CALCULATED USING THE MCA CALCULATIONS IN THE MANUAL.</p>	<table border="1" style="width: 100%; border-collapse: collapse;"> <tr> <td>SCALE:</td> <td>NONE</td> <td>DATE:</td> <td></td> </tr> <tr> <td>DRWN:</td> <td></td> <td></td> <td></td> </tr> <tr> <td>CHK'D:</td> <td>.</td> <td></td> <td></td> </tr> <tr> <td>ENGR:</td> <td>.</td> <td></td> <td></td> </tr> <tr> <td>APP'D:</td> <td>.</td> <td></td> <td></td> </tr> </table>	SCALE:	NONE	DATE:		DRWN:				CHK'D:	.			ENGR:	.			APP'D:	.			<p>FIRE SUPPRESSION HEAT OFF ONLY 07-31-2015</p>	<p style="text-align: center;">RAMMSTEIN AIR</p> <hr/> <table border="1" style="width: 100%; border-collapse: collapse;"> <tr> <td style="font-size: small;">JOB NO.</td> <td style="font-size: small;">2090100</td> <td style="font-size: small;">REV. NO.</td> <td style="font-size: small;">EE-102</td> <td style="font-size: small;">SHEET</td> <td style="font-size: small;">1 OF 1</td> </tr> </table>	JOB NO.	2090100	REV. NO.	EE-102	SHEET	1 OF 1
SCALE:	NONE	DATE:																											
DRWN:																													
CHK'D:	.																												
ENGR:	.																												
APP'D:	.																												
JOB NO.	2090100	REV. NO.	EE-102	SHEET	1 OF 1																								

8 Interlock: Air Flow Switch (Mode #2)



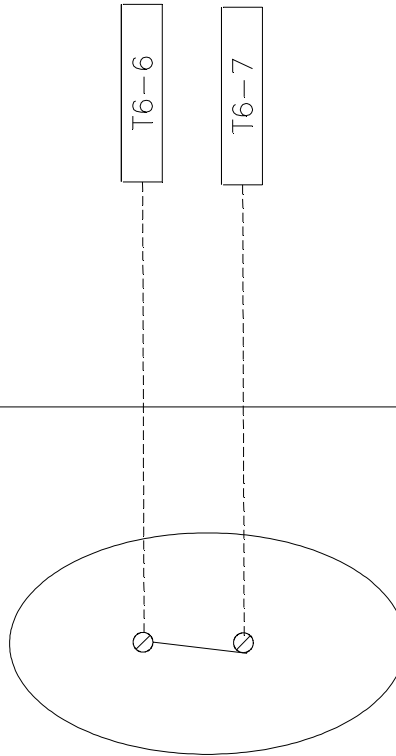
9 Interlock: Spray booth high temp limit switch

1 2 3 4 5 6 7 8

THIS DIAGRAM ONLY SHOWS WIRE CONNECTIONS TO HIGH TEMP LIMIT SWITCH.
REFER TO SPRAY BOOTH MANUAL FOR INSTALLATION OF HIGH TEMP LIMIT SWITCH ONTO BOOTH.

GTP

SPRAY BOOTH



A
B
C
D
E
F

IF ANY OF THE ORIGINAL WIRE AS SUPPLIED WITH THE HEATER MUST BE REPLACED, IT MUST BE REPLACED WITH TYPE THHN [194F (90C)] WIRE OR ITS EQUIVALENT.

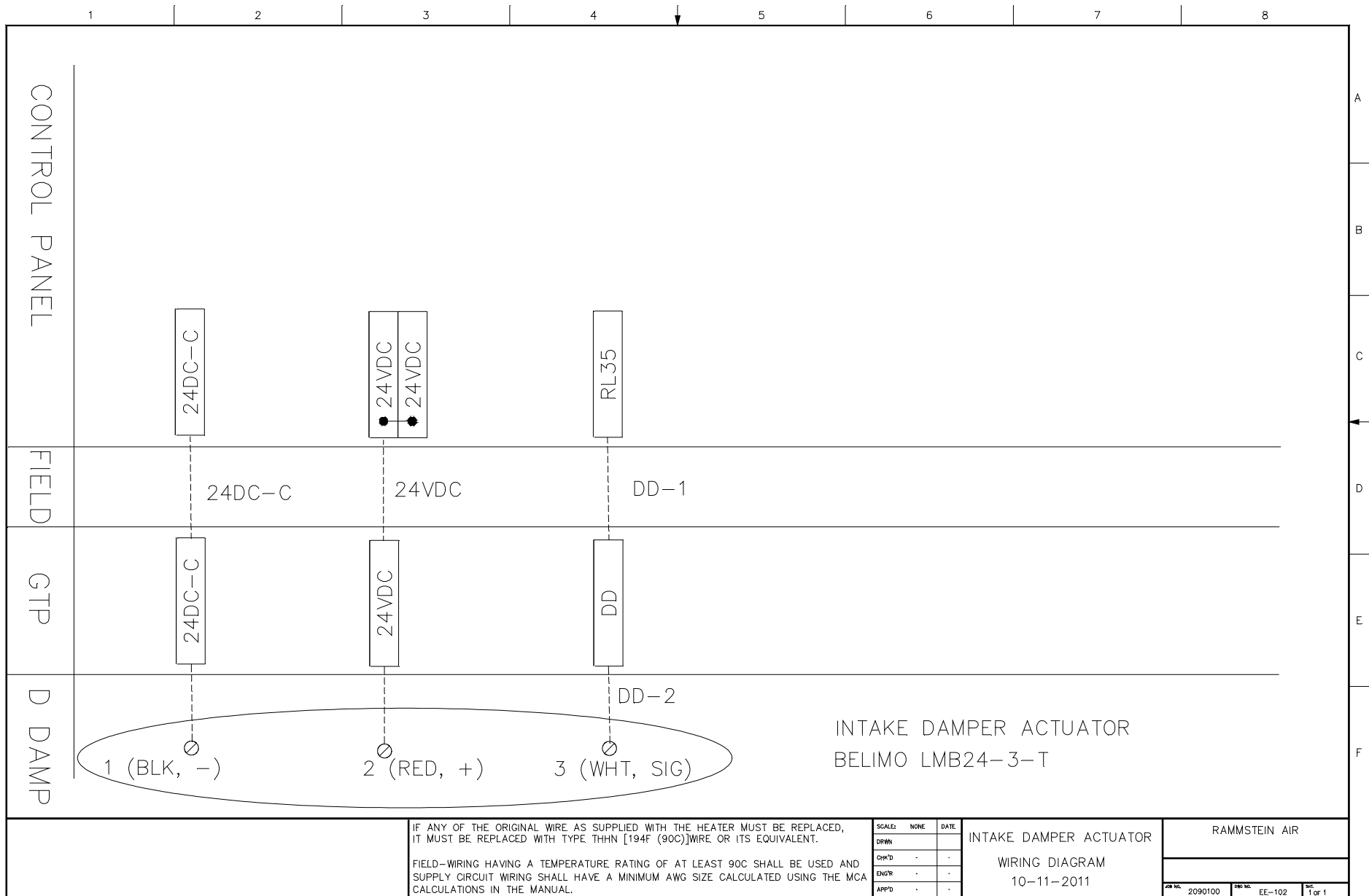
FIELD-WIRING HAVING A TEMPERATURE RATING OF AT LEAST 90C SHALL BE USED AND SUPPLY CIRCUIT WIRING SHALL HAVE A MINIMUM AWG SIZE CALCULATED USING THE MCA CALCULATIONS IN THE MANUAL.

SCALE:	NONE	DATE:	
DRWN:			
CHK'D:	.		
ENGR:	.		
APP'D:	.		

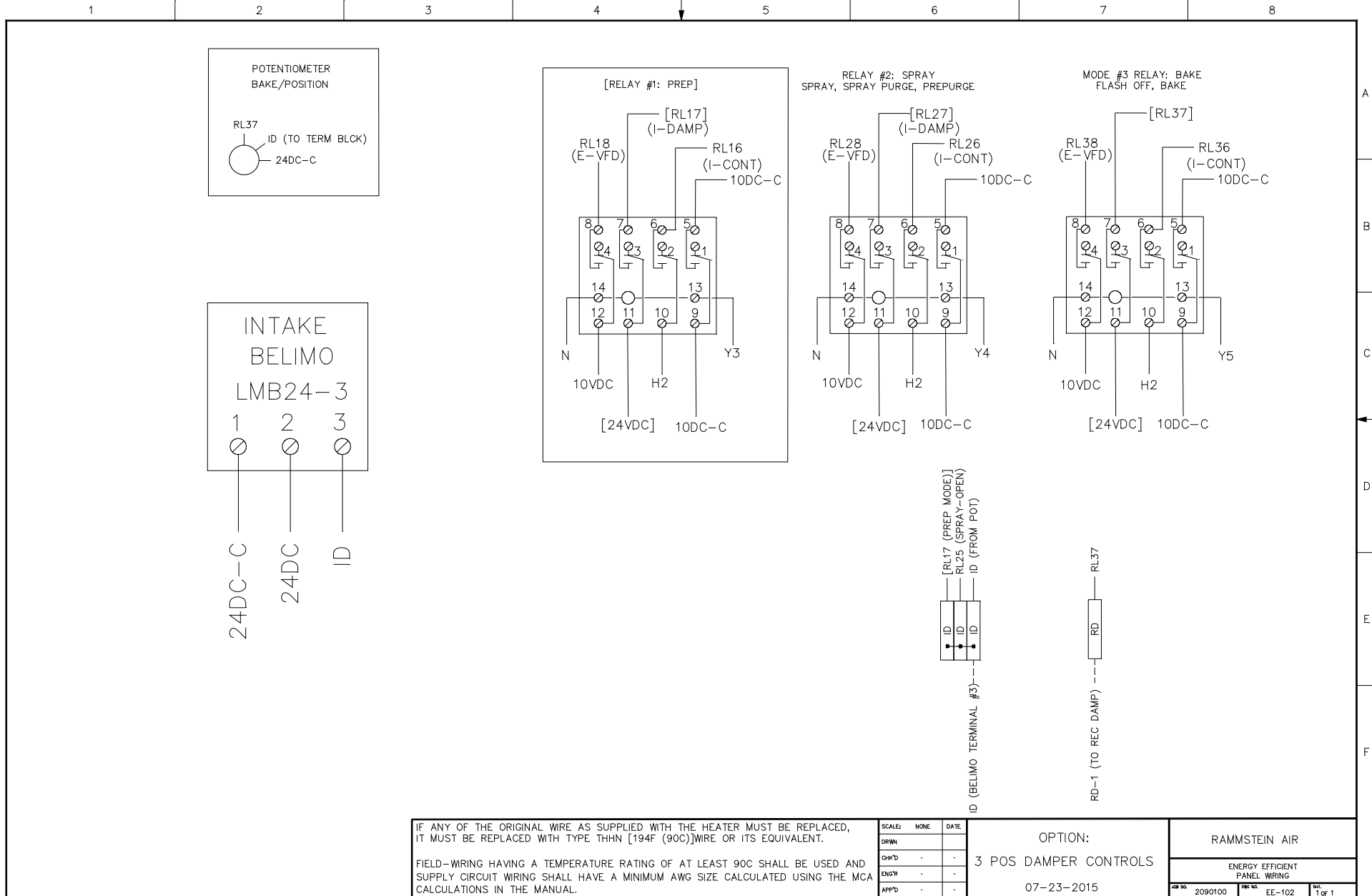
INTERLOCK:
SPRAY BOOTH HIGH TEMP
WIRING DIAGRAM
10-11-2011

RAMMSTEIN AIR		
JOB NO.	DWG NO.	SHEET
2080100	EE-102	1 OF 1

10 Damper: Intake - 2 position (ID)



11 Damper: Intake - 3 position (ID)



IF ANY OF THE ORIGINAL WIRE AS SUPPLIED WITH THE HEATER MUST BE REPLACED, IT MUST BE REPLACED WITH TYPE THHN [194F (90C)] WIRE OR ITS EQUIVALENT.

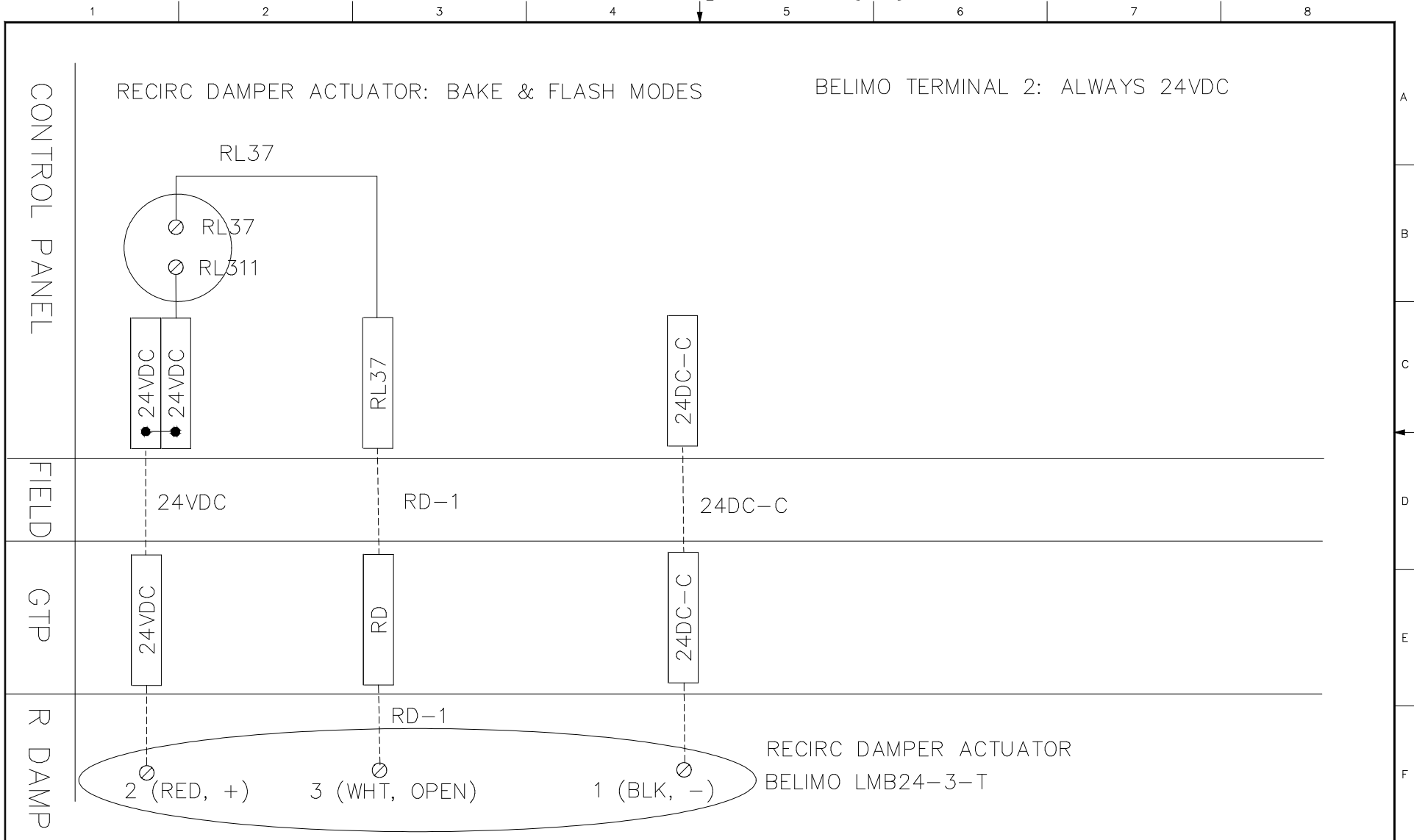
FIELD-WIRING HAVING A TEMPERATURE RATING OF AT LEAST 90C SHALL BE USED AND SUPPLY CIRCUIT WIRING SHALL HAVE A MINIMUM AWG SIZE CALCULATED USING THE MCA CALCULATIONS IN THE MANUAL.

SCALE:	NONE	DATE:	
DRWN:			
CHK'D:			
ENGR:			
APP'D:			

OPTION:
3 POS DAMPER CONTROLS
 07-23-2015

RAMMSTEIN AIR		
ENERGY EFFICIENT PANEL WIRING		
FIG NO. 2090100	REV NO. EE-102	SHEET 1 OF 1

12 Damper: Recirc (RD)



IF ANY OF THE ORIGINAL WIRE AS SUPPLIED WITH THE HEATER MUST BE REPLACED, IT MUST BE REPLACED WITH TYPE THHN [194F (90C)] WIRE OR ITS EQUIVALENT.

FIELD-WIRING HAVING A TEMPERATURE RATING OF AT LEAST 90C SHALL BE USED AND SUPPLY CIRCUIT WIRING SHALL HAVE A MINIMUM AWG SIZE CALCULATED USING THE MCA CALCULATIONS IN THE MANUAL.

SCALE:	NONE	DATE	
DRWN			
CHK'D			
ENGR			
APP'D			

RECIRC DAMPER POSITION
BAKE & FLASH MODES
WIRING DIAGRAM
07-14-2013

RAMMSTEIN AIR		
JOB NO.	DWG NO.	SHEET
2090100	EE-102	1 OF 1